

Tritax Symmetry (Hinckley) Limited

HINCKLEY NATIONAL RAIL FREIGHT INTERCHANGE

The Hinckley National Rail Freight Interchange Development Consent Order

Project reference TR050007

Appendix 6 - ES Appendix 8.1 Transport Assessment [part 15 of 20] Sustainable Transport Strategy and Plan

Document reference: 6.2.8.1-~~DE~~

Revision: **910**

27 FebruaryDecember 2024

Planning Act 2008 The Infrastructure Planning (Applications: Prescribed Forms
and Procedure) Regulations 2009 Regulation 5(2)(a)

The Infrastructure Planning (Environmental Impact Assessment) Regulations 2017
Regulation 14

TRANSPORT & INFRASTRUCTURE PLANNING

Tritax Symmetry (Hinckley) Ltd
Hinckley Rail Freight Interchange
Leicestershire
Sustainable Transport Strategy

TRANSPORT & INFRASTRUCTURE PLANNING

Tritax Symmetry (Hinckley) Ltd
Hinckley Rail Freight Interchange
Leicestershire
Sustainable Transport Strategy

Birmingham
Livery Place, 35 Livery Street, Colmore Business District
Birmingham, B3 2PB
T: 0121 233 3322

Leeds
Whitehall Waterfront, 2 Riverside Way
Leeds, LS1 4EH
T: 0113 233 8000

London
11 Borough High Street
London, SE1 9SE
T: 0207 407 3879

Manchester
11 Portland Street
Manchester, M1 3HU
T: 0161 233 4260

Nottingham
5th Floor, Waterfront House, Station Street
Nottingham, NG2 3DQ
T: 0115 924 1100

~~27th February~~ 10th December 2024

DOCUMENT ISSUE RECORD

Document Number:	HNRFI-BWB-GEN-XX-RP-TR-0014-S2-P09P12
BWB Reference:	NTT 2814

Revision	Date of Issue	Status	Author:	Checked:	Approved:
1	May 2021	Issue 1 for client review	Petr Jandik	Malcolm Ash	Shirley Dumigan
2	June 2021	Issue 2 for TWG	Petr Jandik	Malcolm Ash	Shirley Dumigan
3	August 2022	Issue 3 for review	Malcolm Ash	Shirley Dumigan	Shirley Dumigan
4	November 2022	Issue for client sign off	Malcolm Ash	Shirley Dumigan	Shirley Dumigan
5	November 2023	Issue for Deadline 3	Malcolm Ash	Shirley Dumigan	Andy Passmore
6	December 2023	Issue for Deadline 4	Malcolm Ash	Shirley Dumigan	Andy Passmore
7	9 th February 2024	Issue for Deadline 5	Malcolm Ash	Shirley Dumigan	Andy Passmore
8	19 th February 2024	Issue for Deadline 6	Malcolm Ash	Shirley Dumigan	Andy Passmore
9	27 th February 2024	Issue for Deadline 7	Malcolm Ash	Shirley Dumigan	Shirley Dumigan
<u>10</u>	<u>01 October 2024</u>	<u>Draft Issue for SoS response</u>	<u>Malcolm Ash</u>	<u>Shirley Dumigan</u>	<u>Shirley Dumigan</u>
<u>11</u>	<u>15 November 2024</u>	<u>Draft SoS response, post LPA/LHA feedback</u>	<u>Malcolm Ash</u>	<u>Shirley Dumigan</u>	<u>Shirley Dumigan</u>
<u>12</u>	<u>10th December 2024</u>	<u>Final update for response to SoS</u>	<u>Malcolm Ash</u>	<u>Shirley Dumigan</u>	<u>Shirley Dumigan</u>

Notice

This document has been prepared for the sole use of the Client in accordance with the terms of the appointment under which it was produced. BWB Consulting Limited accepts no responsibility for any use of or reliance on the contents of this document by any third party. No part of this document shall be copied or reproduced in any form without the prior written permission of BWB.

CONTENTS

1.	INTRODUCTION.....	7
	Overview.....	7
	Commitments.....	8
	Report Structure	22
2.	POLICY CONTEXT	23
	Introduction	23
	National Policy Statement for National Networks (2014).....	23
	National Planning Policy Framework (NPPF)	24
	Circular 01/22 National Highways	26
	Leicestershire Local Transport Plan (2011-2026)	26
	Midlands Connect Strategy (2017)	26
	Blaby Development Plan (including Blaby District Local Plan (Core Strategy) 2013 and Blaby District Local Plan (Delivery) DPD 2019)	27
	Hinckley and Bosworth Development Plan Core Strategy (2009)	27
3.	STRATEGY AIM AND OBJECTIVES.....	28
4.	EXISTING CONDITIONS	29
	Site Context	29
	Strategic Road Network	29
	Local Highway Network.....	31
	Collision Review	34
	Walking and Cycling.....	35
	Bus Services	38
	Rail Services	41
5.	CATCHMENT	42
	Anticipated Modal Splits.....	43
6.	BUS OPERATOR CONSULTATIONS	50
	Engagement from 2018	50
	Further Engagement – March 2021, April 2022 and November 2023	51
	Potential Routes and Other Considerations.....	52
7.	BUS STRATEGY	54
	Bus Infrastructure.....	54
	Initial Bus Provision.....	54
	Bus Provision Review	62
8.	WALKING AND CYCLING	63
	Walking	63

Cycling	65
Enhanced Route to Barwell.....	68
Enhanced Route to Elmesthorpe	68
Enhanced Route to Stoney Stanton and Sapcote	68
Enhanced Route to Hinckley	68
Enhanced Route to Burbage	69
Future Measures: Bike Share / E-Bike Scheme / Mobility Hub	74
9. CAR SHARING AND CAR CLUB.....	76
Car Sharing.....	76
Car Clubs.....	77
10. SUMMARY	78
Public Transport.....	78
Active Travel.....	79
Car Share Platform	80
Future Mobility	80

FIGURES

Figure 1: Illustrative Masterplan	8
Figure 2: Indicative Site Location	29
Figure 3: Highway Network	34
Figure 4: Existing Public Rights of Way	36
Figure 5: Cycle Infrastructure.....	36
Figure 6: Hinckley Local Cycle Routes.....	37
Figure 7: Strava Cycling Heatmap.....	38
Figure 8: Existing Bus Services.....	40
Figure 9: Railway Stations.....	41
Figure 10: Modelled HNRFI Employee Trips From HNRFI.....	43
Figure 11: Middle Super Output Areas	44
Figure 12: Suggested DRT based Service Zone (source: Vectare)	58
Figure 13: Future HNRFI Public Transport Network	62
Figure 14: 2km Walking Catchment Area.....	63
Figure 15: Changes to Public Rights of Way	64
Figure 16: Potential Cycle Enhancements.....	70

TABLES

Table 1: STS Commitments	10
Table 2: Existing Bus Services.....	39
Table 3: Summary of Weekday Bus Timetables.....	39
Table 4: Local Rail Services	41
Table 5: Modal Splits Employment Trips.....	44
Table 6: Provisional Employee Modal Splits Targets.....	46

I Table 7: Provisional Employee Modal Splits Targets- Car Sharer/Single Occupancy equivalent	46
Table 8: Morning Peak Hour Person Trip Generation Forecasts	46
Table 9: Evening Peak Hour Person Trip Generation Forecasts	47
Table 10: Public Transport	59
Table 11: Viability Summary Table	71

APPENDICES

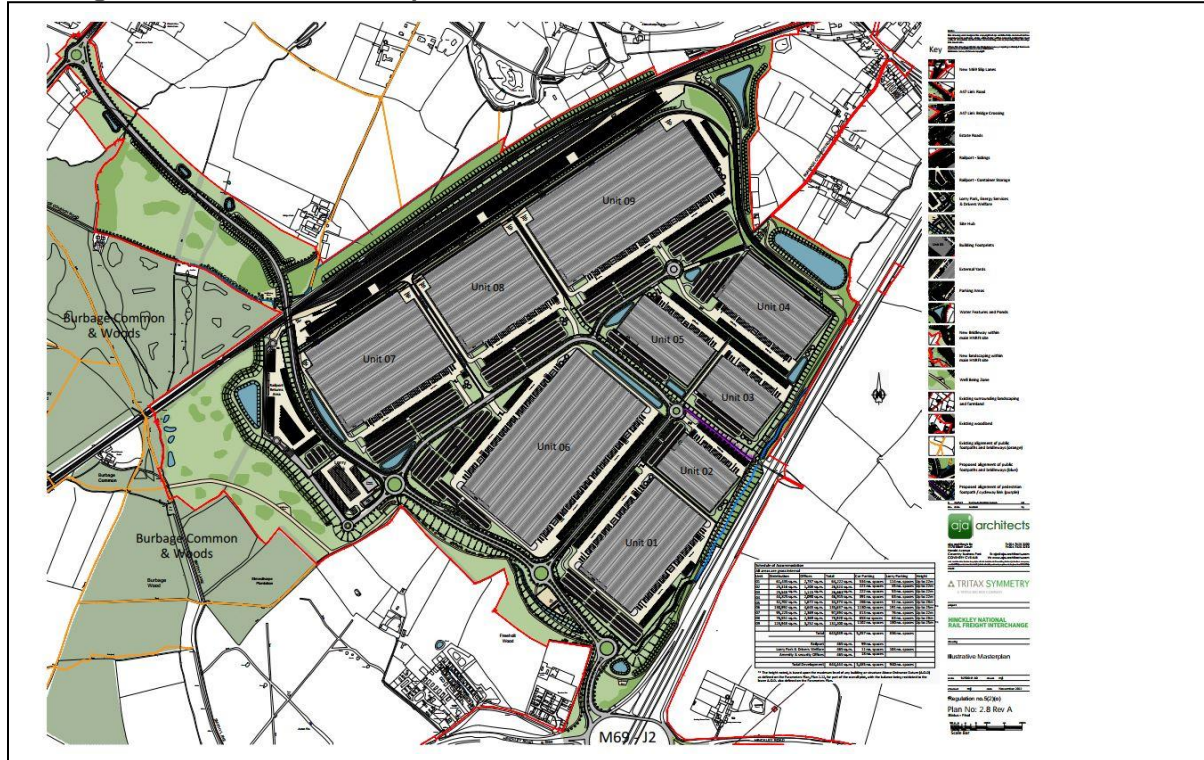
- APPENDIX 1: A47 Long Shoot Cycle Route
- APPENDIX 2: Active Travel Catchments
- APPENDIX 3: HNRFI Car share analysis
- APPENDIX 4: Cycle Routes Options Table
- APPENDIX 5: Cycle Option Schemes
- APPENDIX 6: Proposed Bus Timetables
- APPENDIX 7: Leicester PT Catchment (J21 through travel)

1. INTRODUCTION

Overview

- 1.1. BWB Consulting Ltd (BWB) has been appointed by Tritax Symmetry (Hinckley) Limited (TSH) to provide transportation advice to support a Development Consent Order (DCO) for Hinckley National Rail Freight Interchange (HNRFI). HNRFI is proposed to introduce 850,000 square metres of gross internal area (GIA), comprising 650,000 square metres at ground floor level and a further 200,000 square metres of mezzanine floorspace of new B8 warehousing and distribution space alongside a purpose-built rail freight terminal to the north-east of Hinckley, Leicestershire. The site location is driven by the ability to create a rail hub off the existing Felixstowe-Nuneaton railway line and excellent and direct access to the Strategic Road Network (SRN).
- 1.2. This document has been updated to address points made by the Examining Authority ("ExA") in its Recommendation Report, following an invitation to respond to those points from the Secretary of State in her letter of 10 September 2024. The amendments relate specifically to the enhancement of the modal shift targets and the inclusion of a 6 month pass for the Demand Responsive Transport (DRT).
- 1.3. The amendment for modal share target is explained within Section 5 inclusive of Tables 6-9. Changes to the bus service arrangements can be found in Table 1 and narrative in Section 7. Additional services for private buses have also been included to help promote non-car usage from Southeast Leicester; measure 6a in Table 1 commitments. The inclusion is to boost alternatives to single occupancy car trips with a view to further enhance mode shift.
- 1.4. It appeared from ER 3.3.408 and 3.3.425 that the ExA may not have fully understood that single occupancy car trips were not reported in the Applicant's original STS because the Applicant used the DfT's standard Journey to Work modes which did not differentiate between single occupancy drivers and car drivers who also car share. Car share for a site of this nature will be an important tool in reducing overall vehicle use to and from the site. The targets have been further enhanced for the 10-year horizon year and they are ambitious. However they are reasonable and achievable based on the alternatives to single occupancy car use available to future employees.
- ~~1.2.1.5.~~ The local highways authorities are Leicestershire County Council (LCC), Leicester City Council (LCiC), Warwickshire County Council (WCC) and Coventry City Council (CCC) with National Highways (NH) covering the Strategic Road Network (SRN).
- ~~1.3.1.6.~~ This Sustainable Transport Strategy (STS) sets out a viable strategy for public transport and active travel. It analyses the opportunities to maximise use of sustainable modes of transport to and from the site. Importantly the agreed public transport strategy must deliver options that gives staff a reliable, timely and economic alternative to driving to complement the walking and cycling options.
- ~~1.4.1.7.~~ The indicative site layout is shown below in **Figure 1**.

Figure 1: Illustrative Masterplan



Commitments

~~1.5.1.8.~~ We have taken a holistic approach to sustainable travel focusing on a wide range of measures where it has been evidence-based that they are successful in achieving modal shift. We have summarised the commitments being made to assist, signposting to where further detail is provided and identifying how the commitments are secured.

~~1.6.1.9.~~ We are confident that ~~this~~ these commitments will result in a modal shift of 75% ~~to 60%~~ single-car occupancy drivers (based on census data) to 55% car drivers over ten years, which is comparable with the observed modal shift currently achieved at East Midlands Gateway. For further context these figures have been transposed to estimate single occupancy car trips. This targets a mode shift of 66% to 40% over ten years, as car share will be an important measure to reduce overall vehicle trips. For further detail please refer to Table 7 within this report. East Midlands Gateway, Magna Park and DIRFT all have successfully achieved modal shift mainly through car share and provision of bus services.

~~1.7.1.10.~~ Therefore, the main focus of the modal shift in the Strategy is on car share and bus provision due to the nature of the development and location. The active travel measures provided on site link ~~and~~ allow multiple good connections to an extensive existing network.

~~1.8.1.11.~~ Additional enhancements have been requested by LCC for cycling, whilst these are in our commitment table below (11, 12 and 13), they do not form part of the DCO redline and as such will be delivered via section 278 post consent. These works will be entirely within the highway boundary. The delivery of these works are subject to detailed design being approved by the LHA post consent. The above modal shift is not reliant on these works.

~~1.9.1.12.~~ Many options are already available to cyclists and pedestrians travelling to Hinckley, Barwell and Earl Shilton, however the enhancements identified provide alternatives and additional options for cyclists. The STS satisfies National policy for sustainable travel without these additional enhancements however the applicant in seeking to work collaboratively with the LHA have explored further cycle enhancements and identified three schemes which can be progressed through this Sustainable Transport Strategy.

~~1.10.1.13.~~ The review and monitoring measures allow the strategy to evolve to meet the changing occupier profile and requirements of the development as each unit comes forward.

Table 1: STS Commitments

No.	Measure / Commitment	Trigger	Duration	Paragraph in document	Secured by
General					
1	<p>Modal Shift target</p> <p>The Applicant commits to delivery of modal shift target of 6040% 7566% to 6040% on single car occupancy in 10 years. The Applicant seeks to achieve this through implementation of the STS and the commitments set out in Table 1 to promote car sharing and public transport services.</p> <p>The modal share targets will be reviewed and refined once the results of the first travel survey are available.</p>	First Occupation	For the lifetime of the development	Paragraph 5.28 Table 7	Requirement 9
Buses					
2	<p>Dedicated bus infrastructure to be provided on the A47 Link Road.</p> <p>To include:</p> <ul style="list-style-type: none"> bus interchange with purpose-built shelter and layby on the eastbound carriageway (i.e. 'development side' of the carriageway) providing full kerbed separation from the link road layby and bus shelter on the westbound bus stop to be connected to the site via a signal-controlled pedestrian crossing. 	First Occupation	For the lifetime of the development	Paragraphs 7.1 – 7.3 and 10.7	Requirement 4 and 9
3	<p>Delivery of a bus service from Leicester/Coventry to HNRFI (Currently via the extended X6 Bus service)</p> <p>Service to cover the following:</p>	First Occupation	For the lifetime of the development	Paragraph 7.8-7.12, 7.21 Table 910 , 10.5-10.9	Requirement 9

No.	Measure / Commitment	Trigger	Duration	Paragraph in document	Secured by
	<ul style="list-style-type: none"> • Leicester to Coventry Monday to Sunday • Coventry to Leicester Monday to Sunday • The service will operate between 04:00 and 00:00, seven days a week. The service will not operate on Christmas Day, Boxing Day and New Year’s Day • Covering shift changes 2pm, 6pm, 10pm. The service already covers standard office hours. • Minimum service provision to be every 60 minutes in line with current bus timetabling (subject to changes by the bus operator) • Buses will be diverted from their existing route into the site interchange. <p>The service patronage and effectiveness of provision will be reviewed every year by the Travel Plan coordinator in conjunction with the Bus Operator and reported to Leicestershire County Council Highways and the Travel Plan Steering Group. Annual reporting will enable identification of when demand will result in requirement for a second bus.</p>				
4	<p>Delivery of a bus service via Hinckley and Nuneaton to HNRFI (Currently via extended 8 Bus service)</p> <p>Service to cover the following:</p> <ul style="list-style-type: none"> • Lutterworth to Magna Park to Nuneaton Monday – Sunday 	First Occupation	For the lifetime of the development.	Paragraphs 7.9-7.11, 7.15-7.16, 7.21, Table 910, 10.5-10.9	Requirement 9

No.	Measure / Commitment	Trigger	Duration	Paragraph in document	Secured by
	<ul style="list-style-type: none"> • Nuneaton to Magna Park to Lutterworth Monday - Sunday • The service will operate between 04:30 and 23:20, seven days a week. The service will not operate on Christmas Day, Boxing Day and New Year’s Day • Covering shift changes 2pm, 6pm, 10pm. The service already covers standard office hours • Minimum service provision to be every 90 minutes in line with current bus timetabling (subject to changes by the bus operator) • Buses will be diverted from their existing route into the site interchange <p>The service patronage and effectiveness of provision will be reviewed annually by the Travel Plan coordinator in conjunction with the Bus Operator and reported to Leicestershire County Council Highways and the Travel Plan Steering Group. Annual reporting will enable identification of when demand will result in requirement for a second bus.</p>				
5	<p>Delivery of a Demand Responsive Transit system to cover the settlements identified below and on Figure 12 of the Sustainable Transport Strategy</p> <p>‘Many to One’ Demand Responsive Transit (DRT) Services for the HNRFI employees linking Hinckley, HNRFI, Narborough/Hinckley stations and surrounding rural villages as defined in Figure 12 of the Sustainable Transport Strategy.</p>	First Occupation	For the lifetime of the development	Paragraphs 6.18-6.21, 7.17-7.22, Figure 12, Table 910, 10.5-10.12	Requirement 9

No.	Measure / Commitment	Trigger	Duration	Paragraph in document	Secured by																										
	<p>The HNRFI scheme journeys will have a fixed destination or origin (the Site) for all passengers depending on which leg of the journey they are on. This will lead to less conflict on journeys, with most being inbound or outbound depending on the time of shift.</p> <p>The DRT will cover the villages and towns of:</p> <table border="1"> <tbody> <tr> <td>Sapcote</td> <td>Littlethorpe</td> </tr> <tr> <td>Stoney Stanton</td> <td>Narborough</td> </tr> <tr> <td>Stapleton</td> <td>Huncote</td> </tr> <tr> <td>Hinckley</td> <td>Higham on the Hill</td> </tr> <tr> <td>Barwell</td> <td>Leicester Forest East</td> </tr> <tr> <td>Enderby</td> <td>Potters Marston</td> </tr> <tr> <td>Kirby Muxloe</td> <td>Burbage</td> </tr> <tr> <td>Peckleton</td> <td>Thurlaston</td> </tr> <tr> <td>Kirby Mallory</td> <td>Enderby</td> </tr> <tr> <td>Stapleton</td> <td>Croft</td> </tr> <tr> <td>Stoke Golding</td> <td>Sharnford</td> </tr> <tr> <td>Elmesthorpe</td> <td>Aston Flamville</td> </tr> <tr> <td>Earl Shilton</td> <td>Broughton Astley</td> </tr> </tbody> </table> <p>The service will operate between 04:00 and 00:00, seven days a week. The service will not operate on Christmas Day, Boxing Day and New Year's Day.</p>	Sapcote	Littlethorpe	Stoney Stanton	Narborough	Stapleton	Huncote	Hinckley	Higham on the Hill	Barwell	Leicester Forest East	Enderby	Potters Marston	Kirby Muxloe	Burbage	Peckleton	Thurlaston	Kirby Mallory	Enderby	Stapleton	Croft	Stoke Golding	Sharnford	Elmesthorpe	Aston Flamville	Earl Shilton	Broughton Astley				
Sapcote	Littlethorpe																														
Stoney Stanton	Narborough																														
Stapleton	Huncote																														
Hinckley	Higham on the Hill																														
Barwell	Leicester Forest East																														
Enderby	Potters Marston																														
Kirby Muxloe	Burbage																														
Peckleton	Thurlaston																														
Kirby Mallory	Enderby																														
Stapleton	Croft																														
Stoke Golding	Sharnford																														
Elmesthorpe	Aston Flamville																														
Earl Shilton	Broughton Astley																														

No.	Measure / Commitment	Trigger	Duration	Paragraph in document	Secured by
	<p>The Travel Plan Co-ordinator will provide access for employees resident in the villages and towns covered by the DRT to a DRT app hosted by the DRT operator. Employees will be able to specify and request an arrival time at HNRFI using the DRT app, provided that the request is made at least 24 hours prior to the arrival time. The DRT app will notify the requesting employee of a pick-up time at a specified location or locations within the villages and towns covered by the DRT. <u>The service will take passengers to the interchange within the HNRFI site, and bus stop poles, flags, shelters and timetable display cases are to be provided to support this.</u></p> <p>An employee requesting an arrival time less than 24 hours in the future will be able to use the DRT, however their journey time may be longer to accommodate existing pick-ups defined by employees who have requested the service with at least 24 hours<u>hours'</u> notice.</p> <p>The service patronage and effectiveness of provision will be reviewed annually by the Travel Plan Coordinator and reported to Leicestershire County Council Highways and the Travel Plan Steering Group. Provision can be scaled as further buildings and occupiers become established. An outline of how the service provision could grow would be provision of one service in year one, two services in year three and three services by year eight, however the annual review will decide the appropriate level of provision.</p>				
6	<p>Provision of a Private shuttle bus</p> <p>A private shuttle bus to route between the proposed bus interchange on the A47 Link Road and internal bus stops on demand. This service</p>	First Occupation	For the lifetime of the development	Paragraph 7.4 and 10.9	Requirement 9

No.	Measure / Commitment	Trigger	Duration	Paragraph in document	Secured by
	<p>will act on demand in the early stages of the HNRFI, but provision will always be available when required and no waiting time longer than 15 minutes. Once demand allows the service will operate on a continual loop around the HNRFI site and will coincide stops at the Interchange with arrivals and departures of the scheduled bus services.</p> <p>Service patronage and effectiveness of provision will be reviewed annually by the Travel Plan Coordinator and reported to Leicestershire County Council Highways and the Travel Plan Steering Group.</p>				
6a	<p><u>A private bus service to connect the South East of Leicester City area to cover staff demand, where journey times on the x6 are above 60 mins.</u> <u>This is proposed to be for key shift changeover times, subject to demand, for the 7-day operational period.</u> <u>The service will be available between 04:30 and 23:20, seven days a week. The service will not operate on Christmas Day, Boxing Day and New Year's Day</u></p> <p><u>Service patronage and effectiveness of provision will be reviewed annually by the Travel Plan Coordinator and reported to Leicestershire County Council Highways and the Travel Plan Steering Group.</u></p>	<u>First Occupation</u>	<u>For the lifetime of the development</u>	<u>Para 7.16 and Table 10.9</u>	<u>Requirement 9</u>

No.	Measure / Commitment	Trigger	Duration	Paragraph in document	Secured by
7	<p>Free 6 month bus pass available to any employee to work at each building within 6 months following occupation of the relevant building</p> <p>Employees at first occupation of each building will be eligible to apply for a 6-month free bus pass within the first 6 months following occupation for the public bus services (currently the X6 and 8 bus services), <u>the Demand Responsive Transport (DRT) and any additional private service.</u> Those eligible employees are as defined in line with the standard definition and provisions from Leicestershire County Council.</p> <p>To be administered by the Travel Plan Coordinator who will promote the availability of bus passes to new employees and any other local or national discount schemes intended to encourage travel by public transport.</p>	First Occupation	A free 6 month Bus Pass will be offered to Employees to work at each building for a period of 6 months following occupation of the relevant building.	Paragraph 7.20 and 10.10	Requirement 9
Car Sharing					
8	<p>Provision of a free to use car sharing platform for all staff at HNRFI</p> <ul style="list-style-type: none"> • Car sharing platform e.g. Lift and Go (app or similar) to be available to share details of lift availability to and from the site, to be in place by first occupation • To be marketed by the Travel Plan Coordinator and included within the Travel Packs prepared prior to first occupation of units • Performance of the car sharing scheme to be reviewed annually and shared with Leicestershire County Council Highways and the Travel Plan Steering Group as part of the Site Wide Travel 	First Occupation	For the lifetime of the development	Paragraph 9.1- 9.7 and 10.21	Requirement 8 and 9

No.	Measure / Commitment	Trigger	Duration	Paragraph in document	Secured by
	Plan monitoring. Should monitoring identify the car sharing is not operating at anticipated levels, the annual review will identify additional measures such as further promotion of the app and expansion of the app coverage.				
Active Travel					
9	Cycle Infrastructure <ul style="list-style-type: none"> Covered, secure and accessible cycle parking to be provided to each unit Provision of e-bike charging facilities Showers and changing facilities will also be provided in every unit. All facilities to be provided in accordance with LCC cycle parking standards and local planning authority standards. 	First occupation of each unit	For the lifetime of the development	Paragraphs 8 .12 and 10.14	Requirement 4 and 9
10	Cycle Site Management <p>Cycle parking provision to be monitored for adequacy and reported annually as part of the Site Wide Travel Plan monitoring to Leicestershire County Council Highways and the Travel Plan Steering</p>	First occupation of each unit	For the lifetime of the development	Paragraphs 8.12 and 10.14	Requirement 9

No.	Measure / Commitment	Trigger	Duration	Paragraph in document	Secured by
	Group. Where issues are identified maintenance will be carried out under the responsibility of the site management company.				
11	<p>Employee Travel Packs</p> <p>Travel packs will be agreed with Leicestershire County Council and supplied to each employee by the Occupier. The Travel Pack will contain details of walking, cycling and public transport, local amenities, shops and details of car sharing schemes operating at the Site.</p>	Pre Occupation of each unit	For the lifetime of the development	Paragraph 5.29	Requirement 8 and 9
12	<p>Cycle Travel Plan Promotion</p> <p>The Site Wide Travel Plan (document reference 6.2.8.2D) coordinated by the Travel Plan Coordinator will include a range of measures for occupiers to tailor for their own individual unit travel plans to their workforce including a Cycle to Work scheme, Bike User Groups and national promotion events such as Cycle to Work day</p>	First occupation of each unit	For the lifetime of the development	Paragraph 8.12 and 10.14	Requirement 8 and 9
13	<p>Provision of 3 metre footway/cycleway on the southern side of the A47 Link Road, compliant with LCC standards</p> <p>To provide connectivity to the existing footway/cycle network and onward connection to the wider area.</p> <p>Further Internal connections will be provided as the estate road infrastructure has been completed for each phase of development and before occupation of each unit and rail terminal.</p>	<p>The A47 link road footway/cycleway will be provided prior to first occupation.</p> <p>Further connections will be included as estate road and before occupation of further units.</p>	For the lifetime of the development	Paragraphs 8.12-8.13 and 10.15-10.20	Requirement 4, 5 and 9

No.	Measure / Commitment	Trigger	Duration	Paragraph in document	Secured by
14	<p>Enhancement to Barwell - Toucan crossing on A47 and extension of the existing footway/cycleway by approximately 50 metres.</p> <p>Delivery of this enhancement is subject to satisfactory detailed design post consent being within the public highway and approved by Leicestershire County Council and the Travel Plan Steering Group.</p> <p>Preliminary plans attached at Appendix 5 show a scheme can be delivered within highway boundaries.</p>	Prior to the occupation of 105,001sqm of floorspace	Completed prior to occupation of 105,001 sqm and will form part of the public highway following completion	Paragraphs 8.25-8.30 and 10.15-10.20	Requirement 9
15	<p>Enhancement to Barwell, Gateway at The Common- the introduction of a gateway feature on entry to the urban area.</p> <p>This will be in the form of a northbound carriageway narrowing with southbound priority to safely introduce cyclists back onto the carriageway.</p> <p>Delivery of this enhancement is subject to satisfactory detailed design post consent being within the public highway and approved by Leicestershire County Council.</p> <p>Preliminary plans attached at Appendix 5 show a scheme can be delivered within highway boundaries.</p>	Prior to the occupation of 105,001sqm of floorspace	Completed prior to occupation of 105,001 sqm and will form part of the public highway following completion	Paragraphs 8.25-8.30 and 10.15-10.20	Requirement 9
16	<p>Enhancement to Hinckley and Burbage, New Cycle Lane to the B4669.</p> <p>A footway/cycleway will be provided within highway boundary on the B4669 for the 1.3 km between Winchester Drive and Smithy Lane,</p>	Prior to the occupation of 105,001sqm of floorspace	Completed prior to occupation of 105,001 sqm and will form part of the public	Paragraphs 8.25-8.30 and 10.15-10.20	Requirement 9

No.	Measure / Commitment	Trigger	Duration	Paragraph in document	Secured by
	<p>with cyclists joining the section of Smithy Lane alongside M69 Junction 2 and connecting to the site access infrastructure. An uncontrolled crossing point on the B4669 Sapcote Road would provide access to Winchester Drive and cyclists would continue along Winchester Drive to connect up with the wider Hinckley cycling network.</p> <p>Delivery of this enhancement is subject to satisfactory detailed design post consent being within the public highway and approved by Leicestershire County Council.</p> <p>Preliminary plans attached at Appendix 5 show a scheme could be delivered within highway boundaries.</p>		highway following completion		
Future Mobility and Monitoring					
17	<p>As part of the Travel Plan, the Travel Plan Coordinator will undertake a feasibility review for:</p> <ul style="list-style-type: none"> The establishment of a mobility hub in the vicinity of the public transport interchange within the HNRFI The establishment/participation of a Hinckley bike/e-bike share scheme. The establishment/participation in a Hinckley car club scheme <p>The Travel Plan Coordinator will include findings within the Site Wide Travel Plan monitoring annual report to Leicestershire County Council Highways and the Travel Plan Steering Group.</p> <p><u>Should the single occupancy car targets not look like they will be achieved while the Travel Plan is being monitored, the Travel Plan</u></p>	Annual review following first occupation.	For the lifetime of the development.	Paragraphs 8.49 to 8.53 and 10.22-10.23	Requirement 8 and 9

No.	Measure / Commitment	Trigger	Duration	Paragraph in document	Secured by
	<p><u>coordinator will actively increase measures as set out in the STS and increase promotion training and activity at the HNRFI aligned to the Framework Travel Plan.</u></p> <p><u>This could include intensive short-term campaigns for particular modes of transport (for example intensive programmes to promote active travel, car sharing or public transport) on site travel clinics and Personalised Travel Planning.</u></p>				

Report Structure

2.1. This Sustainable Transport Strategy (STS) is structured as follows:

- **Section 2: Policy Context** – Summarises the key national and local planning policies relating to sustainable transport;
- **Section 3: Strategy Aim and Objectives** – sets out the aims and objectives of this Sustainable Transport Strategy;
- **Section 4: Existing Conditions** – Describes the local highway network and the existing sustainable travel services;
- **Section 5: Catchment** – Describes the distribution of work force and anticipated modal splits;
- **Section 6: Bus Operators Consultations** – Summarises outcomes from conversations held with Arriva and Stagecoach;
- **Section 7: Bus Strategy** – Sets out the HNRFI strategy regarding bus services in the area;
- **Section 8: Walking and Cycling** – Explores proposed active travel options and schemes;
- **Section 9: Car Sharing and Car Club** – Describes car sharing implementation;
- **Section 10: Summary** – Summarises the findings of the report and offers conclusions in relation to the sustainable transport.

2. POLICY CONTEXT

Introduction

- 2.1. In developing this STS, several policy documents have been reviewed and the summary below sets out the policy context of the development. Full review of specific transport and relevant land-use policy documents at national and local level is included in the Transport Assessment that this document is appended to (Document Reference 6.2.8.1).

National Policy Statement for National Networks (2014)

- 2.2. The National networks national policy statement sets out the following:
- need for development of road, rail and strategic rail freight interchange projects on the national networks; and
 - the policy against which decisions on major road and rail projects will be made.
- 2.3. The NPSNN identifies the Government's vision and strategic objectives for the national networks which include:
- networks with the capacity, connectivity and resilience to support national and local economic activity and to facilitate growth and create jobs;
 - networks which support and improve journey quality, reliability and safety;
 - networks which support the delivery of environmental goals and the move to a low carbon economy;
 - networks which join up our communities and link effectively to each other.
- 2.4. The NPSNN contains policy statements across the full range of relevant planning considerations. The following paragraphs are relevant to sustainable transport considerations for NSIPs (National Significant Infrastructure Projects):
- 2.5. Paragraph 2.47 of the NPS states *"the siting of many existing rail freight interchanges in traditional urban locations means that there is no opportunity to expand, that they lack warehousing and they are not conveniently located for the modern logistics and supply chain industry"*.
- 2.6. Paragraph 2.56 states *"it is important that SRFIs are located near the business markets they will serve – major urban centres, or groups of centres – and are linked to key supply chain routes. Given the locational requirements and the need for effective connections for both rail and road, the number of locations suitable for SRFIs will be limited, which will restrict the scope for developers to identify viable alternative sites"*.
- 2.7. Paragraph 3.15 states *"The Government is committed to providing people with options to choose sustainable modes and making door-to-door journeys by sustainable means an attractive and convenient option. This is essential to reducing carbon emissions from transport"*.
- 2.8. Paragraph 3.16 includes the Government's commitment to sustainable travel *"it is investing in developing a high-quality cycling and walking environment to bring about a step change in cycling and walking across the country."*

- 2.9. Paragraph 3.17 stresses the importance of accommodating pedestrians and cyclists; noting *“there is a direct role for the national road network to play in helping pedestrians and cyclists. The Government expects applicants to use reasonable endeavours to address the needs of cyclists and pedestrians in the design of new schemes. The Government also expects applicants to identify opportunities to invest in infrastructure in locations where the national road network severs communities and acts as a barrier to cycling and walking, by correcting historic problems, retrofitting the latest solutions and ensuring that it is easy and safe for cyclists to use junctions”*.
- 2.10. Paragraph 4.86 states *“SRFIs involve large structures, buildings and the operation of heavy machinery, which can require continuous working arrangements. In terms of appropriate locations, the NPS therefore acknowledges that SRFIs often may not be suitable adjacent to built-up residential areas”*.
- 2.11. The Government's policy to address its vision for a low carbon sustainable transport system and to support the intermodal rail freight industry is included in paragraph 2.53: *“The Government's vision for transport is for a low carbon sustainable transport system that is an engine for economic growth, but is also safer and improves the quality of life in our communities. The Government therefore believes it is important to facilitate the development of the intermodal rail freight industry. The transfer of freight from road to rail has an important part to play in a low carbon economy and in helping to address climate change.”*
- 2.12. Paragraph 2.54 outlines the need for a network of SRFIs across the regions, to serve regional, sub-regional and cross regional markets to facilitate modal shift. Furthermore paragraph 2.54 states *‘In all cases it is essential that these have good connectivity with both the road and rail networks.’*

National Planning Policy Framework (NPPF)

- 2.13. The Government's National Planning Policy Framework (NPPF) replaced most previous Planning Policy Statements (PPS) and Planning Policy Guidance Notes (PPG) documents on 27 March 2012, and was updated most recently December 2023. It sets out the Government's expectations and requirements from the planning system. It provides guidance for local councils to use when defining their own personal local and neighbourhood plans. This approach allows the planning system to be customised to reflect the needs and priorities of individual communities.
- 2.14. The NPPF defines the delivery of sustainable development through three roles:
- an economic objective;
 - a social objective; and
 - an environmental objective.
- 2.15. These objectives should be delivered through the preparation and implementation of plans and the application of the policies in this Framework; they are not criteria against which every decision can or should be judged. Planning policies and decisions should play an active role in guiding development towards sustainable solutions, but in doing so should take local circumstances into account, to reflect the character, needs and opportunities of each area (paragraph 9).

- 2.16. The NPPF at paragraph 87 states that *“Planning policies and decisions should recognise and address the specific locational requirements of different sectors. This includes making provision for clusters or networks of knowledge and data-driven, creative or high technology industries; and for storage and distribution operations at a variety of scales and in suitably accessible locations.”*
- 2.17. The NPPF at paragraph 108, states that *“Transport issues should be considered from the earliest stages of plan-making and development proposals, so that:*
- a) *The potential impacts of development on transport networks can be addressed;*
 - b) *Opportunities from existing or proposed transport infrastructure, and changing transport technology and usage, are realised – for example in relation to the scale, location or density of development that can be accommodated;*
 - c) *Opportunities to promote walking, cycling and public transport use are identified and pursued;*
 - d) *The environmental impacts of traffic and transport infrastructure can be identified, assessed and taken into account – including appropriate opportunities for avoiding and mitigating any adverse effects, and for net environmental gains; and*
 - e) *Patterns of movement, streets, parking and other transport considerations are integral to the design of schemes and contribute to making high quality places.”*
- 2.18. Paragraph 109 states that, *“Significant development should be focused on locations which are or can be made sustainable, through limiting the need to travel and offering a genuine choice of transport modes. This can help to reduce congestion and emissions and improve air quality and public health. However, opportunities to maximise sustainable transport solutions will vary between urban and rural areas, and this should be taken into account in both plan-making and decision-making.”*
- 2.19. Within the context of the NPPF, paragraph 116 sets out that development should:
- Give priority first to pedestrian and cycle movements, both within the scheme and with neighbouring areas; and second – so far as possible – to facilitating access to high quality public transport, with layouts that maximise the catchment area for bus or other public transport services, and appropriate facilities that encourage public transport use;
 - Address the needs of people with disabilities and reduced mobility in relation to all modes of transport;
 - Create places that are safe, secure and attractive – which minimise the scope for conflicts between pedestrians, cyclists and vehicles, avoid unnecessary street clutter, and respond to local character and design standards;
 - Allow for the efficient delivery of goods, and access by service and emergency vehicles; and
 - Be designed to enable charging of plug-in and other ultra-low emission vehicles in safe, accessible and convenient locations.
- 2.20. Paragraph 117 seeks to ensure that, *“All developments that will generate significant amounts of movement should be required to provide a travel plan, and the application should be supported by a transport statement or transport assessment so that the likely impacts of the proposal can be assessed.”*

Circular 01/22 National Highways

- 2.21. National Highways Circular 01/22 provides a refresh of guidance in connection to development and the Strategic Highway Network. Within the document there is a significant refocusing on locational considerations and enhancement of active travel modes, and explicit recognition of the need to “support the needs of the freight and logistics sector” (Paragraph 7). Key items for consideration for HNRFI are set out below:
- Paragraph 12: “New development should be facilitating a reduction in the need to travel by private car and focused on locations that are or can be made sustainable.”
 - Paragraph 15: “The company will support local authorities in achieving this aim through its engagement with their plan-making and decision-taking stages, while recognising the varying challenges that will be presented by certain sites based on their land use, scale and/or location”
 - Paragraph 28: “The policies and allocations that result from plan-making must not compromise the SRN’s prime function to enable the long-distance movement of people and goods.”
 - Paragraph 30: “The NPPF is clear that planning policies should recognise the specific locational requirements of different economic sectors, including for storage and distribution operations at a variety of scales and in suitably accessible locations. To operate efficiently, the freight and logistics sector requires land for distribution and consolidation centres at multiple stages within supply chains including the need for welfare facilities for the drivers of commercial vehicles. For instance, some hubs serve regions and tend to be located out-of-town near the SRN.”
- 2.22. It is clear from the policy that focus needs to be placed on Sustainable Travel as a priority for new development. However, it is accepted that specifically logistics facilities will be located in areas close to rail and SRN links and will therefore be generally in out of town locations, recognising the specific locational requirements of this sector as per paragraph 87 of the NPPF.

Leicestershire Local Transport Plan (2011-2026)

- 2.23. The Leicestershire Local Transport Plan 3 (LTP3) seeks to give some certainty to transport planning and policy in developing a strategic framework.
- 2.24. The LTP recognises that planning policies will be grounded in the reality that most people will wish to own and use cars, but as far as possible, new development will be planned to avoid increasing traffic pressure by ensuring that a choice of attractive alternatives is available.

Midlands Connect Strategy (2017)

- 2.25. The Midlands Connect strategy sets out proposals for achieving the untapped economic potential of the midlands.
- 2.26. It also recognises an economic growth corridor between Coventry and Leicester, and a chance to facilitate agglomeration in these areas.

- 2.27. In addition, it also states that it supports the development of new Strategic Rail Freight Interchange (SRFI) proposals, particularly where rail and road access is good.

Blaby Development Plan (including Blaby District Local Plan (Core Strategy) 2013 and Blaby District Local Plan (Delivery) DPD 2019)

- 2.28. The core strategy sets out the overarching strategy and core policies to guide future development in the district up to 2029.
- 2.29. It recognises that *'One of the key obstacles affecting the economic success of the District is its transport network.'* (Paragraph 4.18).
- 2.30. A key policy aim is to *'deliver the transport needs of the District and to encourage and develop the use of more sustainable forms of transport'* (section 5).
- 2.31. With regard to rail freight enhancements Policy CS10 of the Blaby District Core Strategy states:

'Within strategic (including national and regional) and financial constraints, Blaby District Council will support the exploration of realistic opportunities for improving rail-based movement of goods and people'.

Hinckley and Bosworth Development Plan Core Strategy (2009)

- 2.32. Hinckley and Bosworth's current Core Strategy highlights the importance of reducing reliance on car travel, this is set out in their Spatial Objectives, specifically 13:

'Spatial Objective 13: Transportation and Need to Travel To reduce the high reliance on car travel in the borough and to increase the opportunities for other forms of transport by focusing the majority of development in the Hinckley urban area where there is a range of transport options available and through securing improvement to public transport infrastructure and facilities that promote walking and cycling and through the use of travel plans.'

3. STRATEGY AIM AND OBJECTIVES

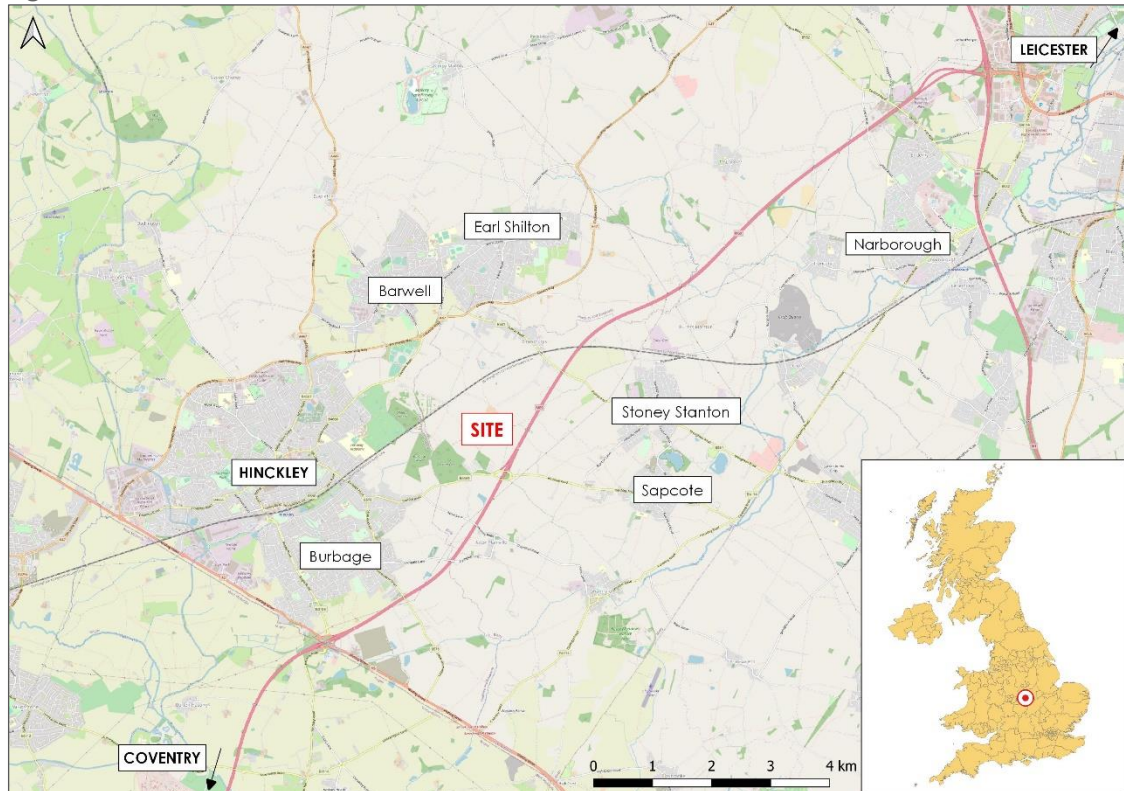
- 3.1. The previous section highlighted that a key objective of the relevant transport policies is to reduce the demand for car travel by promoting alternative, sustainable transport options and widening commuter travel choices. Without positive measures to actively encourage car drivers to consider and use these alternatives, this is unlikely to occur.
- 3.2. Information, incentives and encouragement needs to be applied to influence how people choose to commute to work. Therefore, the headline vision for the STS is: To create an environment for employees that actively promotes a range of sustainable, low carbon travel choices and reduces the overall need to commute to work by single-occupancy car.
- 3.3. This aim will assist in reducing the overall volume of car journeys to and from HNRFI whilst supporting the site's sustainable access options for prospective employees from the outset. This will in turn reduce traffic impacts on the surrounding highway network, to the benefit of reduced congestion, better air quality and improved road safety in the local area.
- 3.4. Measures outlined in this STS will not only bring associated benefits to the individual businesses and their employees at the HNRFI, but will also help to mitigate any transport impacts of the development and provide travel benefits to the wider local community.
- 3.5. To realise this vision, the following specific objectives have been identified:
 - Minimise the overall level of single-occupancy car trips associated with commuting to and from the HNRFI;
 - Minimise the amount of single-occupancy car trips and costs associated with visitor and business travel;
 - Facilitate and encourage the use of sustainable transport options amongst employees and visitors to the site;
 - Ensure that the differing transport needs of all site users are taken into account as far as practicable;
 - Work in partnership with the local planning and highway authorities, and other key stakeholders, to achieve both site-specific and area-wide reductions in single-occupancy car-based commuting; and
 - Continually develop, evaluate and review progress in the strategy's delivery.
- 3.6. These objectives will work towards achieving the overall aim by bringing forward a package of measures from the outset that focus on promoting access to the HNRFI by sustainable transport options as an attractive and viable alternative to the private car.
- 3.7. This will also specifically influence employee attitudes towards their own travel behaviour by considering sustainable travel alternatives for everyday trips, as opposed to single-occupancy car travel.
- 3.8. A Framework Travel Plan has been developed to specify the measures promoting sustainable transport and set out the travel behaviour objectives.

4. EXISTING CONDITIONS

Site Context

- 4.1. The site covers an area of predominantly undeveloped fields to the east of Hinckley in the Blaby district of Leicestershire as illustrated at **Figure 2**. Hinckley town centre and railway station are both located approximately two miles to the west, Earl Shilton and Barwell lie approximately two miles to the north and Stoney Stanton and Sapcote are approximately two miles to the east. The site is bound by the Felixstowe-Nuneaton Cross-country rail line which forms its north-western boundary and the M69 motorway to the east (including Junction 2 at the southeast corner of the site). The B4669 Hinckley Road runs east-west to the south of the site, and Burbage Common Road routes through the site and enters/ exits at two separate locations to the north).

Figure 2: Indicative Site Location



Strategic Road Network

M1

- 4.2. The M1 is a north-south arterial route stretching the 311km (193 miles) between London and Leeds. The M1 passes Northampton, Leicester, Nottingham, Derby, Sheffield and Wakefield. The nearest point of access in relation to the site is approximately 7.2 miles to the north-east at Junction 21.

M6

- 4.3. The M6 extends from Junction 19 of the M1 at the Catthorpe interchange, near Rugby via Birmingham then heads north, passing Stoke-on-Trent, Liverpool, Manchester, Preston, Lancaster, Carlisle and terminating at the Gretna Junction (J45). The nearest point of access to the M6 in relation to the site is approximately 9.5 miles to the south of the site via Junction 2, known as the Ansty Interchange.
- 4.4. The M6 Toll, also known as the Birmingham North Relief Road or the Midland Expressway, connects M6 Junction 3a at the Coleshill Interchange to M6 Junction 11A at Wolverhampton with 27 miles of six-lane motorway. The M6 Toll is the northern bypass for the West Midlands, designed to relieve traffic congestion along the M6 through the urban area.

M42

- 4.5. The M42 routes north-east from Bromsgrove in Worcestershire to the south-west of Ashby-de-la-Zouch in Leicestershire, passing Redditch, Solihull, the National Exhibition Centre (NEC) and Tamworth on the way. The M42 is a road of two parts. Its southern section forms part of the box of motorways around Birmingham, traversing the southern and eastern sides of the city and linking the M5 and M6; it then strikes off to the north-east, towards Nottingham and the East Midlands. The A42 is a direct continuation of the motorway route that carries traffic through to the M1.
- 4.6. The nearest point of access to the M42 in relation to the site is located approximately 25km (15.5 miles) to the north-west via Junction 10 of the M42.

M69

- 4.7. The M69 is the motorway across approximately 26km (16 miles) between Leicester and Coventry, passing Nuneaton and Hinckley with connections available to the M1 and M6. The M69 connects to the M1 via Junction 21, approximately 11km (7 miles) to the north-east of the site and at the southern end of the M69, there are free-flowing slip roads onto the M6 towards Birmingham. Further connections are also available to the A5 via Junction 1 of the A5, approximately 4km (2.5 miles) to the south-west of the site.
- 4.8. The nearest point of access in relation to the site is located at the southern extent of the site via Junction 2 of the M69.

A5

- 4.9. The A5 trunk road connects with M69 Junction 1 approximately 4.2km south of the site access (and Junction 2) and acts as a key north – south link between the M42/Tamworth and the M1/M45/Milton Keynes. The A5 is a single carriageway road within the vicinity of Hinckley. To the north of the M69 the road is subject to a speed limit of 40mph and to the south it is subject to a speed limit of 60mph (national speed limit).
- 4.10. Around 2 miles to the south of the M69 the A5 turns into a grade separated dual carriageway. To the north the A5 provides access from the M69 to both the recently developed Hinckley Commercial Park and the Teal Business Park.

- 4.11. National Highways (NH) have removed a scheme proposed for widening the section of the A5 between Dodwells roundabout and the Longshoot junction, to create a dual carriageway and a shared use foot / cycleway. This is to be included within a wider A5 strategy being brought forward under Roads Investment Strategy (RIS)3.

Local Highway Network

- 4.12. In addition to the site accessibility to the SRN, for the purposes of commuting it is equally important that the site is accessible from the local highway network.

B4669 Sapcote Rd/ Hinckley Road

- 4.13. The B4669 runs in an east-west alignment immediately south of the site and forms a grade-separated junction with the M69 motorway at Junction 2. Access to the site is to be derived from this location. To the west the B4669 Sapcote Road provides a connection into Hinckley and to the east the B4669 Hinckley Road provides connections to the villages of Sapcote and Stoney Stanton.
- 4.14. The B4669 is a single carriageway road and within the vicinity of the site is subject to the national speed limit (60mph). On entry to the urban area of Hinckley this reduces to 40 and then 30mph. There are various side road junctions along the B4669 including the B578, Brookside and Park Road which serve residential areas in the southern part of Hinckley.
- 4.15. At the side road junction with Park Road the B4669 continues as the B590. In the urban area of Hinckley there is generally footway provision on both sides of the road, and in the vicinity of the site a footway on the northern side of the carriageway links Hinckley with M69 Junction 2.
- 4.16. The carriageway is generally well lit in the urban area of Hinckley and at key junctions but is generally unlit in the rural environment between Hinckley and M69 Junction 2.
- 4.17. To the east of M69 Junction 2 the B4669 provides a connection with the village of Sapcote and the B4114 Coventry Road to the south. In this location the road is generally rural in nature and is subject to the national speed limit. When the road enters the village of Sapcote the speed limit reduces to 30mph.
- 4.18. Footway provision is generally provided on both sides of the carriageway within the urban area of Sapcote. In Sapcote and at key junctions the carriageway is lit. However, in rural settings the carriageway is generally unlit.

Burbage Common Road

- 4.19. Burbage Common Road is a rural lane which links the B4668 and the B581 passing through the northern part of the site. The majority of the carriageway consists of a single-track lane (3m wide) with intermittent passing places. It is primarily fronted by open fields with the occasional residential property and Woodhouse Farm butchery. It is unlit; pedestrians/vehicles share the space.
- 4.20. On the northern boundary of the site, it passes over the Felixstowe – Nuneaton rail line via a railway bridge. It is proposed that as part of the development Burbage Common

Road will be stopped-up within the site boundary. Access will be retained for existing properties but movements within the site will be restricted.

B590

- 4.21. The B590 connects with the arterial routes into the town of Hinckley including the B4669, Leicester Road, Hollycroft, B466 and Rugby Road. These roads act as the local distributor roads from the surrounding residential areas. The B590 forms a circular route around the town centre. Therefore, this road prevents vehicles from having to pass through the town centre to travel from the south to the north or the east and the west of Hinckley.
- 4.22. The carriageway varies in width and generally connects with side roads via signalised or priority junctions with ghost island right turn lanes. The road is subject to a 30mph speed limit. The carriageway is generally well lit with footways on both sides which connect the Town Centre with the surrounding residential environment. Along Hollier's Walk to the north of Hinckley Town Centre there is a time limited HGV restriction in place for vehicles over 7.5 tonnes between 1600 and 1000 except for loading. The B590 where it is known locally as Hawley Road provides a connection with Hinckley Rail Station.

A47

- 4.23. The A47 is a major road which runs along the northern edge of Hinckley. This is likely to act as a local route for vehicular movements accessing the site from the surrounding area which are not as well connected to the strategic highway network. This would include villages such as Barwell and Kirkby Mallory and industrial sites such as the Caterpillar UK Ltd plant in the village of Peckleton.
- 4.24. To the west the A47 connects with the A5 and Nuneaton with Leicester City Centre to the east. Within the area of Hinckley, the A47 is a 9-metre-wide single carriageway road with no direct frontage. It has a segregated walking and cycling route on its southern boundary. The A47 connects with amongst others the B4666, Stoke Road, B4667, B4668 and B581 via either roundabout or signalised junctions.

B581

- 4.25. The B581 runs from the A47 and the village of Barwell to the village of Stoney Stanton passing over the M69. The road is primarily rural in nature with some intermittent residential frontage. It is subject to a 40mph speed limit to the north of the M69, the national speed limit (60mph) to the south of the M69 and 30mph within the village of Stoney Stanton. It provides secondary access to the site via Burbage Common Road or via a connection with Hinckley Road/B4669 to the south of the site.

B4114 Coventry Road

- 4.26. The B4114 is an arterial road to the south of the site. It connects with the A5 to the west via a complex priority junction and to the east with the outskirts of Leicester and M1 Junction 21. This connects with the development site via a simple priority junction with the B4669.
- 4.27. The B4114 provides access to several villages along the route including Sharnford, Primethorpe, Croft, Littlethorpe and Narborough. The road is generally a single

carriageway road except for a small section within the vicinity of the village of Croft which widens to a dual carriageway with a central reservation.

- 4.28. Where there is no direct frontage to the carriageway it is generally unlit with no footway provision. Where the road passes through the villages of Sharnford and Narborough the road is generally well lit with footway provision in place. The speed limit along the road varies from 30mph to 60mph national speed limit. There are no weight limit restrictions on the road with various lay-bys along the side of the carriageway.

B4668

- 4.29. The B4668 connects with Burbage Common Road which passes through the proposed development site. The road then continues into Hinckley where it is directly fronted by residential properties. The B4668 is a single carriageway road with a minimum width of around 8 metres. It is generally well lit and has footway provision on both sides of the carriageway within the urban area.
- 4.30. Within Hinckley the road is subject to a 30mph speed limit. Outside the urban area the speed limit increases to 40mph and then 60mph. No weight or height restrictions are in place along the road.

Hollycroft/ Stoke Road

- 4.31. Hollycroft and Stoke Road provides another connection into Hinckley Town Centre and to the A590 from the A47 and residential suburbs in north-western Hinckley. This connects with the development site via the B590 and B4669.
- 4.32. These roads pass through residential suburbs with direct frontage. Stoke Road also has speed cushions in place as traffic calming measures. The carriageways are a minimum of 6 metres wide, generally well-lit and have footway provision on both sides. The road is subject to a 30mph speed limit. This road is also a major bus route into Hinckley.

B4666

- 4.33. The B4666 connects the B590 with the A5. This road therefore acts as a major route into Hinckley from the west and connects the western areas of Hinckley with the development site via the B590 and B4669.
- 4.34. This is a single carriageway road which is well lit. There is a shared use walking and cycling route which runs along the northern side of the carriageway and is a major bus route into the town. The road is fronted directly by residential properties as well as commercial properties including Tungsten Park and Harrowbrook Industrial Estate.

Rugby Road

- 4.35. Rugby Road is another key link road which connects residential areas to the south-east of Hinckley to M69 Junction 1. This is likely to be a key connecting route to the site from residential areas as well as commercial and industrial units located in south-west Hinckley.

4.36. Again, this road has limited direct frontage and is subject to 30mph to 40mph speed limit. The carriageway is generally well lit with a footway on the western side of the carriageway and a shared use walking and cycling path on the eastern side of the carriageway.

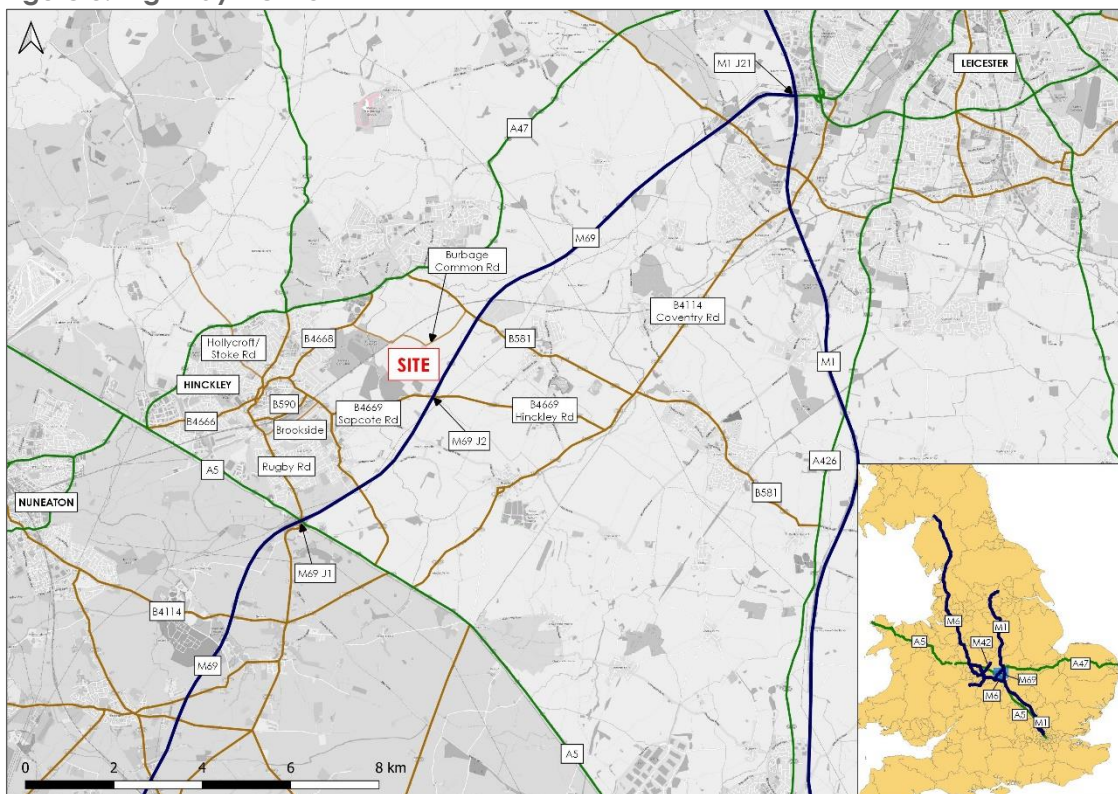
Brookside

4.37. Brookside is a local road which connects Rugby Road with the B4669. This connects the site with residential area to the south-west of Hinckley and runs parallel to the B590.

4.38. The carriageway is generally around 6 metres wide with traffic calming measures in the form of speed humps in place. Off-road lay-bys for residential parking is generally provided on both sides of the carriageway. The carriageway is well lit with pedestrian footways on both sides of the carriageway and is also identified as suitable for on-road cycling by the provision of road markings on the carriageway edge.

4.39. A detailed plan of the SRN and local highway network is shown in **Figure 3**.

Figure 3: Highway Network



Collision Review

4.40. Details of collisions in the last 5 years over the wider area of influence, the subsequent trends and analysis is provided in the collision report submitted at Deadline 4 (Doc Ref: 18.4.3A Rev 2). This highlights the existing personal injury collisions that involved pedestrians and cyclists, which is summarised below.

4.41. In total, 56 pedestrians were injured or killed over the five years period. Of the 56, 39(70%) were recorded as slight, 12 (21%) serious and 5 (9%) fatal injuries. Of the 56 Killed

or Injured, 24 were crossing at either facilities or elsewhere, 9 were in the carriageway, 7 on the footway/verge and 16 were in an unknown location.

- 4.42. In total, 39 cyclists were injured or killed over the latest five years period within the study area. Of the 39 cyclists, 25 were recorded as having slight injuries, 12 serious injuries and 2 fatal injuries. No clusters with three or more cyclist casualties have been identified and the two fatal collisions that involved cyclists both occurred on the B4114. Whilst they occurred at different locations, they were within 1.0km of each other. However, they did occur two years apart and there were no common causal factors reported between the two collisions.
- 4.43. The active travel safety record across the wider Area of Influence does not suggest that there are significant safety issues on roads surrounding and further afield from the Site.

Walking and Cycling

- 4.44. **Figure 4** shows the existing Public Right of Way (PROW) in and around the site.
- 4.45. The PROW within the site boundary include:
- Footpath U50/1, 2 and 3. Footpath U50 traverses the site in a north-south alignment and is separated into three sections:
 - Section 1 connects to a network of footpaths in Burbage Woods to Footpath V35 towards the centre of the development site;
 - Section 2 connects Footpath V35 to Burbage Common Lane, close to Woodhouse Farmhouse; and
 - Section 3 connects Burbage Common Lane, close to Woodhouse Farmhouse to the B581 at Elmesthorpe, crossing over the railway line.
 - Footpath V35/1 and 2. Footpath V35 traverses the site in a northwest – southeast alignment and is separated into two sections:
 - Section 1 connects the gyratory of M69 Junction 2 to Footpath U50;
 - Section 2 connects Footpath U50 to Footpath U52 close to where Burbage Common Road passes over the railway line.
 - Footpath U53 connects Burbage Common Road close to Woodhouse Farmhouse to a bridleway which runs along the western edge of the site.
 - Footpath U52/6 and 7. Footpath U52 runs along the eastern section of the site connecting a network of footpaths in Burbage Woods to Burbage Common Road at the railway bridge.
 - Footpath V23 runs north from Burbage Common Road, at level over the railway line to a bridleway which continues north to Elmesthorpe and a separate footpath which continues to the B4668 close to its junction with the A47.

Figure 4: Existing Public Rights of Way

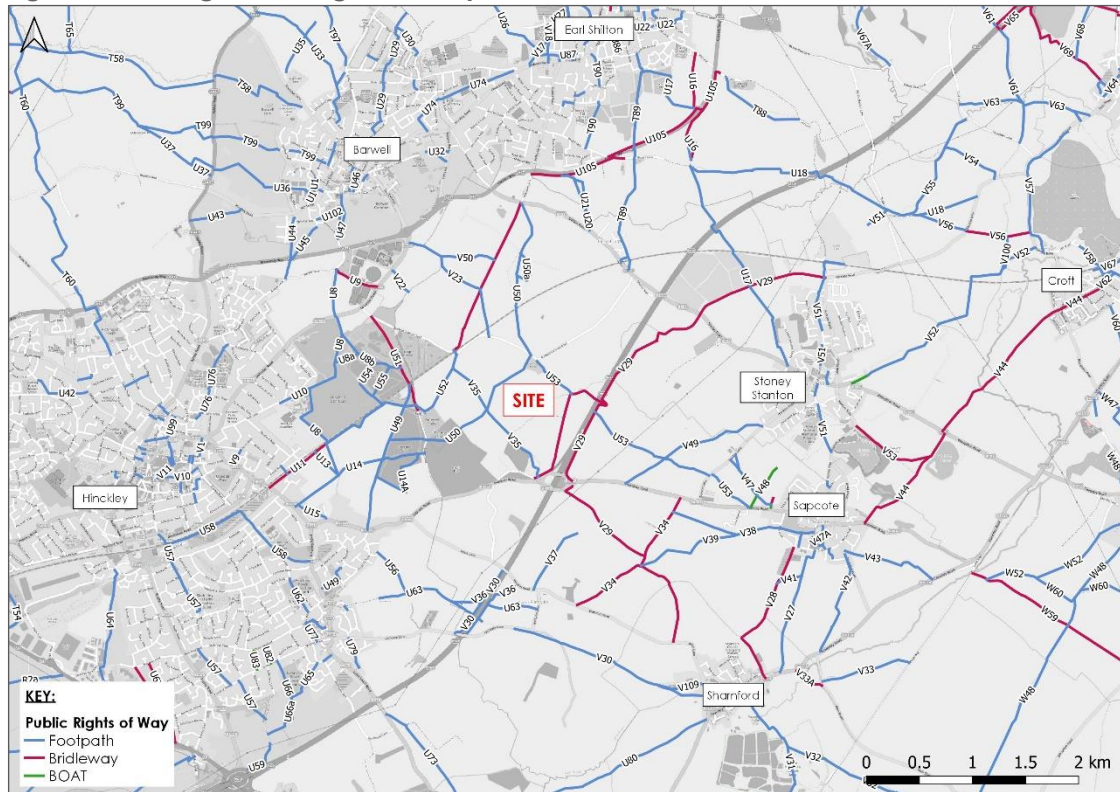
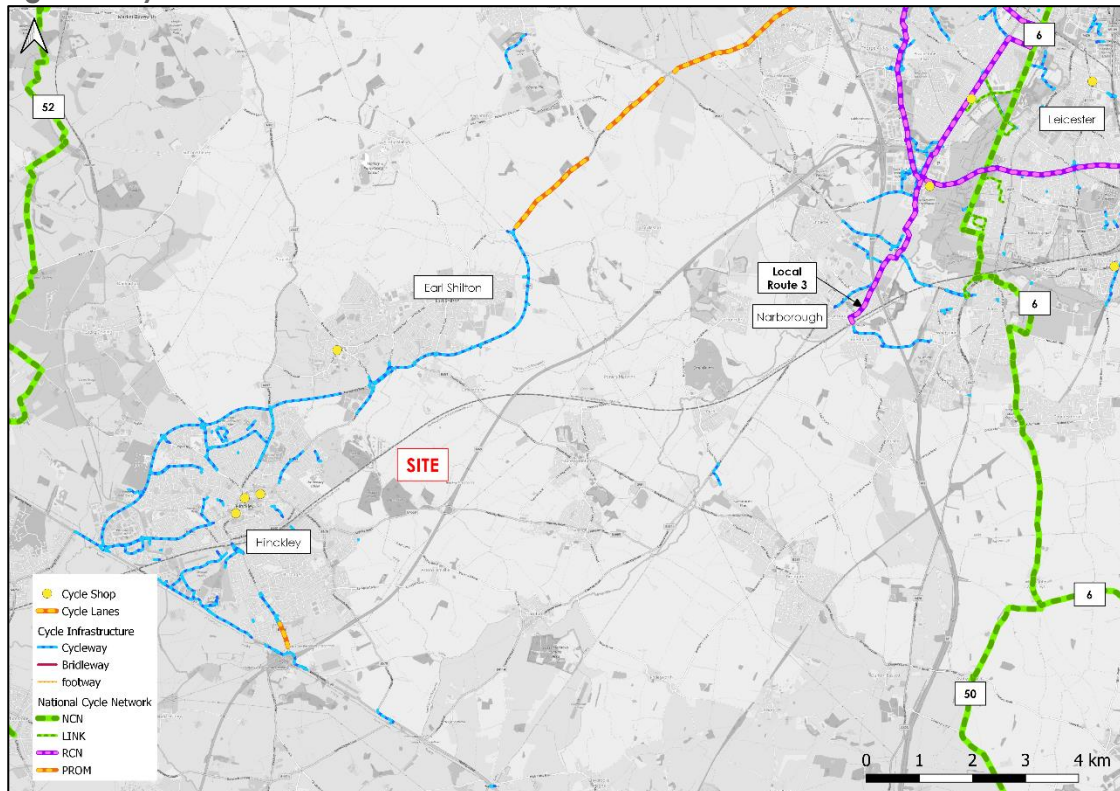


Figure 5: Cycle Infrastructure

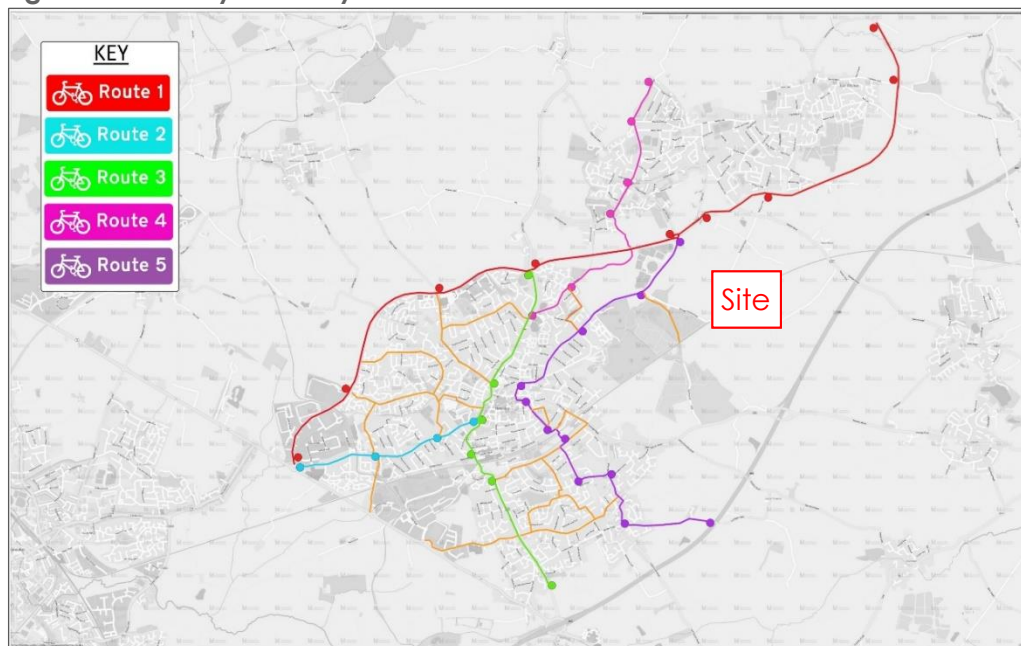


4.46. **Figure 5** shows that although there is cycle infrastructure in place in the area, the access to the site is relatively limited. However, the A47 does benefit from cycle infrastructure

from the A5 through to the roundabout with Leicester Road (north of Earl Shilton) in the form of a shared footway/cycleway. To the north of that roundabout there are on-road cycle lanes. There are also shared footway/cycleways on sections of both the A447 Ashby Road and the B4668 Leicester Road.

- 4.47. A review of the collision data from DfT (Department of Transport) for the most recently available 5 years period (2018-2022) showed that one serious collision and four slight collisions occurred involving a cyclist on the section of the A47 between the roundabout and the point where the A47 crosses the M1 in Leicester Forest East, which does not indicate severe safety issues for cyclists.
- 4.48. A cycle route to Hinckley is provided along the A47 on the northern edge of town to the roundabout with the B4668.
- 4.49. Leicestershire County Council's Hinckley Town Centre improvement scheme included some cycling infrastructure improvements. The council signed five local cycle routes as shown in **Figure 6**. Route 5 is the nearest to the site running along the B4668. It is a north to south route, connecting the A47 (Route 1) on the eastern side of Hinckley and Barwell (Route 4) for travel towards Sharnford and Aston Flamville.

Figure 6: Hinckley Local Cycle Routes

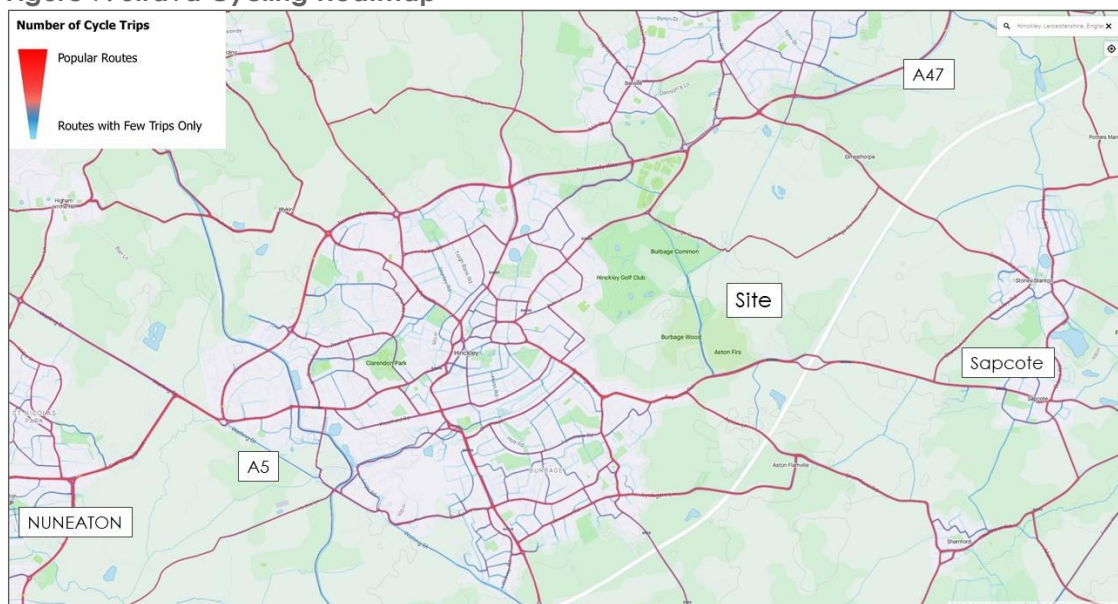


Source: Leicestershire County Council

- 4.50. Leicester city centre can be accessed either via off-road NCN (National Cycle Network) route 6 or via a local cycle route 3 along Narborough Road. Additionally, as the local cycle route 4 runs adjacent to the city ring road, other parts of the city can be also easily accessed by bike. To get to the City from the site, cyclists can utilise the A47 and go via Enderby to Narborough and or the B4114 to the south or go via local cycle routes to the north west.
- 4.51. To provide an insight of the most popular routes for cycling in the area, Strava data has been analysed and the results are presented in **Figure 7**.

- 4.52. As with any mobility data source, Strava data does not cover the entire population. However, several independent academic studies¹ have analysed the relationship between Strava Metro data and data recorded by electronic or human cycle counters and found robust correlations between the two. It could be argued that Strava data monitors athletic activities, it is also a home for general travel.
- 4.53. Studies² have discovered that there is a significant growth in the tracking of commutes among the community, for example 85% of all Strava activities in Manchester have been commutes. It is therefore believed that Strava members' travel patterns are representative of the overall population and that it also gives a robust insight about the use of the network by cyclists.
- 4.54. The results show that there are no corridors with strong cycle demand. Cyclist flows along the A47 are above average as well as the flows of cyclists between Hinckley and Nuneaton along the A47 The Long Shoot and the B4666 Coventry Road. In contrast, the amount of cycling in the heart of the town centre is relatively low. Despite the shared footways/cycleway adjacent to the A5 to the south of Dodswell Roundabout to the M69, the number of cyclists along this road is very low.

Figure 7: Strava Cycling Heatmap



Source: www.strava.com

Bus Services

- 4.55. The Hinckley site lies to the north-east of the main town centre. There are bus services that run in relative proximity to the site, but there are no stops that sit within the recommended (CIHT) 400 metre walk radius. **Table 2** highlights the core services linking the major towns and cities in the vicinity.

¹ <https://medium.com/strava-metro/cdc-finds-strava-metro-data-correlates-strongly-with-census-active-commuting-data-8ab1be0fe130>

² <https://medium.com/strava-metro/tracking-the-rise-of-bike-commuting-around-the-world-5bada94585c5>

4.56. As set out later in this report in **Chapter 5**, the key areas where employees are anticipated to commute from include Hinckley, Leicester, Nuneaton, Blaby and Coventry. The Eastern Villages of Stoney Stanton, Sapcote and Sharnford are also predicted to contain demand for employment at the HNRFI site.

Table 2: Existing Bus Services

Service	Operator	Route	Approx. Frequency		
			Mon-Fri	Sat	Sun
X6	Arriva	Coventry – Leicester (express via M69)	c 90 mins	c 90 mins	-
158	Arriva	Nuneaton – Leicester	20 mins	30 mins	60 mins
148	Stagecoach	Leicester – Hinckley – Nuneaton	30 mins	30 mins	60 mins
8	Arriva	Hinckley- Lutterworth	60 mins	60 mins	3 services at shift changes

4.57. Weekday timetables are summarised in **Table 3**. First/ last service based on the time the service arrives/leaves the nearest bus stop to the site. Times for 158 and 148 services are for the Crescent bus station / Regent Street in Hinckley town centre.

Table 3: Summary of Weekday Bus Timetables

Service	Route	First Service		Last Service	
		'Outbound'	'Inbound'	'Outbound'	'Inbound'
X6	Coventry – Leicester (express via M69)	07:57 (from Coventry)	08:04 (from Leicester)	18:32 (to Leicester)	18:38 (to Coventry)
158	Nuneaton – Leicester	06:53 (from Nuneaton)	06:45 (from Leicester)	21:14 (to Leicester)	20:36 (to Nuneaton)
148	Leicester – Hinckley – Nuneaton	05:34 (from Earl Shilton) 07:49 (from Leicester)	05:58 (from Nuneaton)	21:31 (to Nuneaton)	22:07 (from Nuneaton) 20:38 (to Earl Shilton) 19:08 (to Leicester)
8	Hinckley- Lutterworth	05:10 (Hinckley)	06:39 Lutterworth	21:18 Hinckley	22:55 Lutterworth

X6

4.58. The X6 is an express service between Leicester and Coventry which uses the M69 in the vicinity of the site. It detours into Burbage as part of the route as shown in **Figure 8**. The route presents advantages for an employee service; it covers the larger conurbations where the workforce is likely to be sourced, it is relatively fast due to the use of the M69 and therefore has a reduced number of stops.

158

4.59. The 158 service links Nuneaton, Hinckley and Leicester via the A47. Some infrequent services extend the route with a short loop covering Desford to the north-west, as illustrated in **Figure 8**.

148

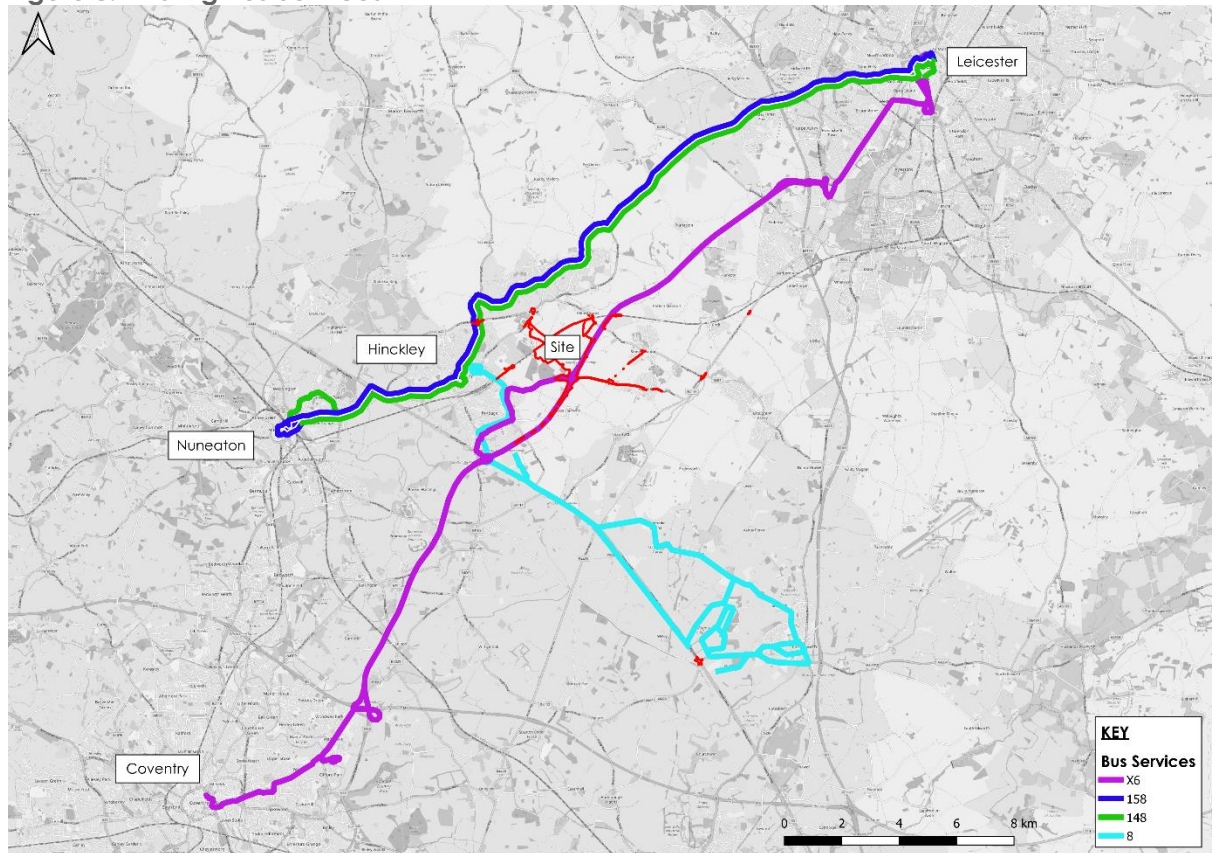
4.60. The 148 service, operated by Stagecoach, copies the route of Arriva service 158. It does not serve Desford and includes a loop in the north of Hinckley. Its frequency is 10 minutes longer than the 158 service.

8

4.61. The 8 service is operated by Arriva and links Hinckley to Lutterworth via Magna Park and Hinckley Park. It provides early morning services in the week day and Saturdays to these parks and other destinations on route and Sunday services at shift change over times only. It provides a 60 minute frequency through the day (excluding Sundays).

4.62. **Figure 8** below displays the existing bus services that could connect the site to Hinckley, Nuneaton, Coventry and Leicester.

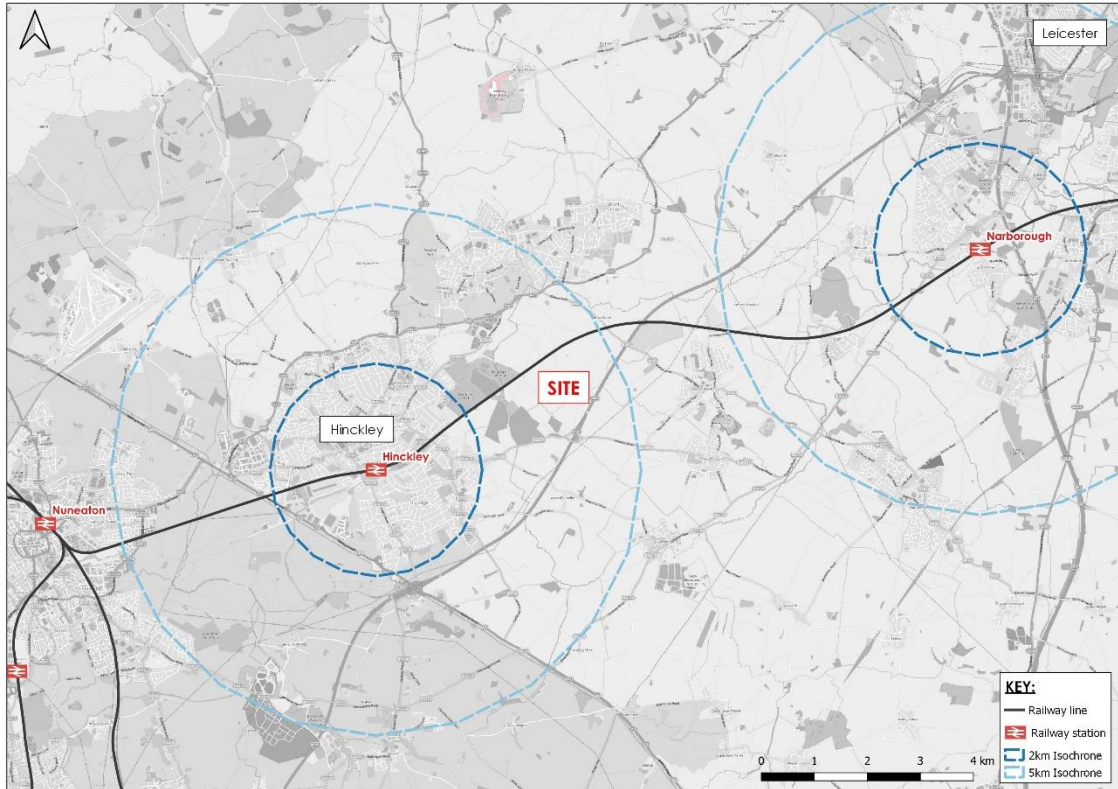
Figure 8: Existing Bus Services



Rail Services

- 4.63. The site is located on the Felixstowe to Nuneaton line. The nearest stations are in Hinckley and in Narborough as shown in **Figure 9**. The Hinckley Railway Station is within approximately 4km of the centre of the site, whilst Narborough Railway Station is approximately 10km away. The Hinckley station provides hourly trains in the direction of both central Leicester, Nuneaton and Birmingham.

Figure 9: Railway Stations



- 4.64. **Table 4** provides information about train frequency and journey times to nearby destinations. Whilst the journey times from Leicester and Nuneaton are short, there are no direct trains between Hinckley and Coventry and a change either in Nuneaton or Birmingham is required. The times shown for the first and last services are the times trains arrive at Hinckley Train Station.

Table 4: Local Rail Services

Destination	Approx. Weekday Daytime Frequency	Approx. Journey Time	First Service		Last Service	
Leicester	60min	19min	06:18 (from Leicester)	05:55 (to Leicester)	22:56 (from Leicester)	23:11 (to Leicester)
Nuneaton	60min	6min	05:49 (from Nuneaton)	06:38 (to Nuneaton)	23:05 (from Nuneaton)	23:15 (to Nuneaton)
Coventry (one change)	60min	40min - 1h 15min	06:56 (from Coventry)	06:38 (to Coventry)	23:05 (from Coventry)	23:15 (to Coventry)

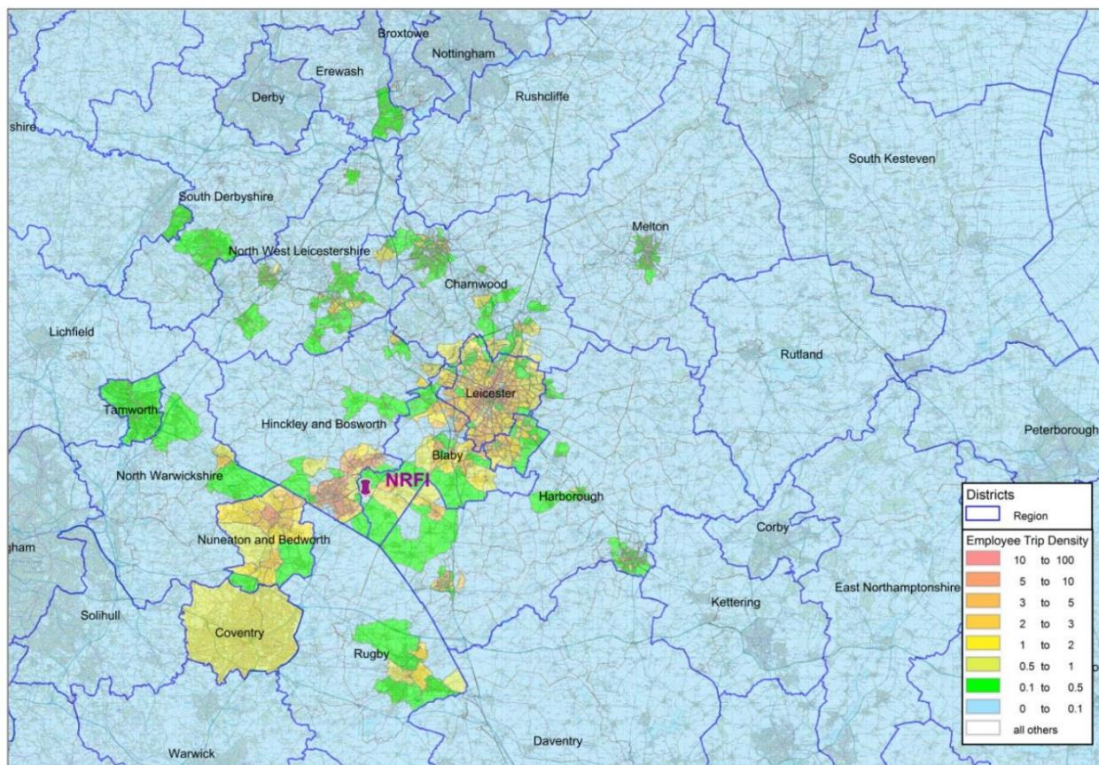
5. CATCHMENT

- 5.1. Hinckley NRFI will be a significant employment site on the edge of the West and East Midlands. The trip distribution note (TN1- Document ref APP-142) produced as part of the strategic modelling suite of documents provides an insight to the extents of the commuter journeys.
- 5.2. The site is positioned adjacent to Hinckley, approximately 14km from Leicester, 12km from Nuneaton and 17km from Coventry. It is also close to smaller settlements within Hinckley and Bosworth and Blaby, such as Earl Shilton, Barwell, Elmesthorpe, Stoney Stanton and Sapcote.
- 5.3. The wider distribution of work force has been derived from Pan Regional Transport Model (PRTM), which is based on a bespoke gravity model, calibrated to trip length distributions from comparable sites, including DIRFT and Magna Park.
- 5.4. **Figure 10** graphically demonstrates the output of the data processed from the gravity model. The general pattern aligns with expectations based on population densities across the area, with Hinckley, Leicester, Nuneaton, Blaby and Coventry all feasible key employee origins. The Eastern Villages of Stoney Stanton, Sapcote and Sharnford are also predicted to contain demand for employment at the HNRFI site.
- 5.5. Shift patterns are a critical consideration when reviewing the overall access to the site. B8 warehousing, generally operate 3 shifts in an 8-hour cycle across 24 hours: 06:00-14:00, 14:00-22:00 and 22:00-06:00 with office/management staff working standard, but flexible working hours.
- 5.6. It is anticipated that circa 8,400 to 10,400 jobs will be created at HNRFI. Given the 24—hour nature of B8 warehousing, these employees will attend site at various times across a typical week and will therefore not all be on-site at any given time. Attendance will generally be split as follows:
 - 70% are warehouse staff/drivers (shift workers);
 - 20% office/management staff
 - 10% support staff such as cleaners, catering, security etc.
- 5.7. Additional active travel catchments have been included within **Appendix 2**. These diagrams illustrate walk and cycle distances mapped against population numbers within specific distances. This has allowed further refinement of the active travel modal share and identification of appropriate interventions as discussed within this report.
- 5.8. The catchments have considered the existing and proposed population within set distances from the site centroid, including sustainable urban extensions (SUEs) at Barwell and Earl Shilton. This has provided a clear picture of the likely attractiveness of walking and cycling routes and where priority for investment in upgrades should be focussed to maximise potential usage by these modes. The catchments do not include the early housing allocations to the east of the M69. However, the bridleway over the M69 and linking to the Site could provide a further eastern link, should they come forward.
- 5.9. Figure A1 of **Appendix 2** illustrates the walking catchment of up to 2km. As is common with large employment schemes close to SRN, the population catchment from the site

centroid is limited. Parts of Elmesthorpe are within walking distance, but this has a low population density and even when considering walking distances from the edge of the site, there remains a limited population. Therefore, the walking mode share percentages have been adjusted from the Census baseline to reflect this.

- 5.10. Figures A2 to A4 within **Appendix 2** analyse the cycling catchments and population within them. This is based on census population data for the respective settlements within the catchments.
- 5.11. The proximity of Hinckley/Burbage as the largest population centre results in the prediction that 44% of cyclists would be drawn from the town. A further 17% are predicted to be drawn from Barwell and Earl Shilton. These destinations are within 5km of the site and would be the journeys most likely to be replaced with cycling trips. The remaining spread and distance of other settlements would suggest that concentration on improvements to cycle links to Hinckley, Barwell and Earl Shilton would present the most viable solution for enhancing cycle mode share.

Figure 10: Modelled HNRFI Employee Trips From HNRFI



Source: AECOM TN 1 Hinckley NRFI Development Trip Distribution. Map contains Ordnance Survey data © Crown copyright and database right 2018.

Anticipated Modal Splits

- 5.12. Initial modal split assessment data has been extracted from Office of National Statistics (ONS) Neighbourhood Statistics (2011) for the Middle Super Output Area (MSOA) – “Blaby 010” and “Blaby 012”, to determine the method of travel to work to the areas and establish the likely method of travel to work for employment trips. Both MSAO were selected for analysis, as parts of the site are located within both areas as shown in **Figure 11**.

Figure 11: Middle Super Output Areas

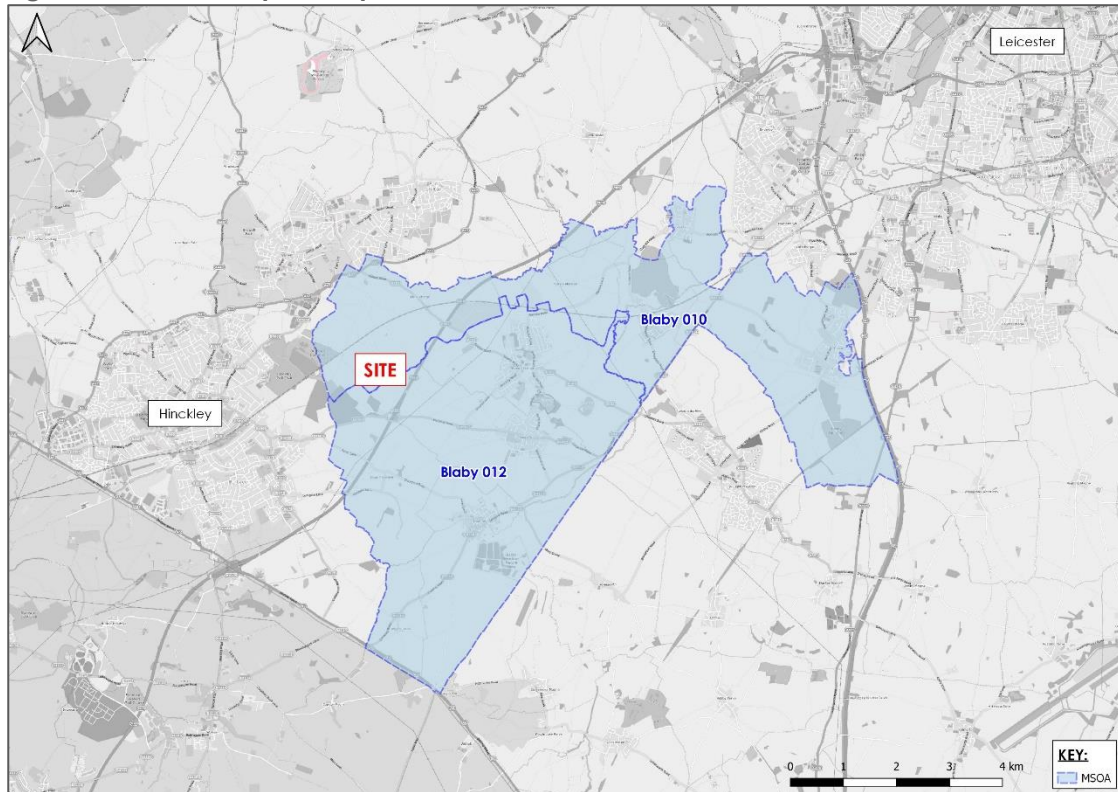


Table 5: Modal Splits Employment Trips

Mode of Travel	Blaby Existing*	EMG Observed Mode Share [^]	Gigafactory Target Mode Share	Baseline For HNRFI
Car Driver	75%	60%	65%	75%
Car Passenger	7%	12%	14.5%	9%
Public Transport	3%	24%	5.4%	8%
Active	11%	<1%	10.1%	4%
Motorbike	1%	<1%	1%	1%
Working From Home	<1%	2%	2%	2%
Other	1%	0%	1%	1%

I-EMG-East Midlands Gateway SRFI

Source: *Nomis – Office for National Statistics,

[^] <https://www.itpworld.net/news-and-views/2022/creating-better-places-a-case-study-east-midlands-gateway>

- 5.13. **Table 5** demonstrates that, based on Census data, approximately 3% of trips are made using public transport and 11% are walking / cycling trips within the MSOA. Given the site location and nature of the development the Census 2011 baseline level of walking

is high. Therefore, adjustments have been made based on the population catchment assessments and reported modal share from East Midlands Gateway (EMG- January 2022), which represents a reasonable proxy for active travel due to geography and the similar operational nature of the site. Warwickshire County Council also suggested that reference should be made to West Midlands Gigafactory as an example of good practice with regards to sustainable travel provision.

- 5.14. The EMG site has a comparable walking catchment to the HNRFI, being relatively remote, with limited residential areas within the 2km catchment. Though cycling catchments for Hinckley cover several settlements within the 10km radius. Consequently, the baseline HNRFI active travel modal share is lower than the census data, but remains higher than the EMG site modal share.
- 5.15. Public transport trips within the census are also low, which reflects the coverage of bus routes within the MSOAs. EMG's public transport services are very good due to proximity to the East Midlands Airport and the number of services that stop in the vicinity. This is reflected in the high public transport mode split in Table 5 for EMG. The baseline case for HNRFI will be marginally higher than the census estimate, based on the likely workforce and travel profiles for logistics sites. However, there is clear scope to enhance both public and active travel modes above the baseline.
- 5.16. Car driver mode share in the baseline has been retained and reducing this will be the principal target for mode shift across the site. Notably the ability to boost car sharing will raise the numbers of car passengers and reduce single occupancy car trips. It is these modes, especially for shift-based workers, that present the easiest and most attractive mode shift choice. The opportunities for car sharing will increase as the number of employees on site grow.
- 5.17. The mode share figures presented in **Table 5** provide a baseline from which the Site Wide Framework Travel Plan (SWFTP) will set 'measures and targets' to encourage greater adoption of sustainable modal travel options following the development.
- 5.18. The provisional employee travel targets will be set as outlined below in Table 6. This is based on a projection at 5 years post occupation and 10 years post occupation (full completion). Establishing good travel habits from the outset will depend on strong messaging and the availability of good quality alternative modes of travel to reduce the reliance on single occupancy car trips.

Table 6: Provisional Employee Modal Splits Targets

Mode of Travel	Baseline For HNRFI	Suggested HNRFI Target 5 years	Suggested HNRFI Target 10 Years
Car Driver	75%	65%	65 55%
Car Passenger	9%	12%	14 15%
Public Transport <u>and</u> <u>Private Bus/DRT</u>	8%	15%	15 19%
Active	4%	5%	8%
Motorbike	1%	1%	1%
Working From Home	2%	2%	2%
Other	1%	<1%	0%

5.19. Table 6 shows the mode of travel as recorded through the census allocation of modes. However a number of the car drivers within the 75% figure are expected to be car sharers and the 75% figure does not therefore represent single occupancy trips. In order to address this, Table 7 below has set out the single occupancy targets and car share targets for ease of comparison to existing developments

Table 7: Provisional Employee Modal Splits Targets- Car Sharer/Single Occupancy equivalent

<u>Mode of Travel</u>	<u>Baseline For HNRFI</u>	<u>Suggested HNRFI Target 5 years</u>	<u>Suggested HNRFI Target 10 Years</u>
<u>Car Single Occupancy</u>	<u>66%</u>	<u>53%</u>	<u>40%</u>
<u>Car Share</u>	<u>18%</u>	<u>24%</u>	<u>30%</u>
<u>Public Transport and Private Bus/DRT</u>	<u>8%</u>	<u>15%</u>	<u>19%</u>
<u>Active</u>	<u>4%</u>	<u>5%</u>	<u>8%</u>
<u>Motorbike</u>	<u>1%</u>	<u>1%</u>	<u>1%</u>
<u>Working From Home</u>	<u>2%</u>	<u>2%</u>	<u>2%</u>
<u>Other</u>	<u>1%</u>	<u><1%</u>	<u>0%</u>

5.19.5.20. The resultant predicted forecast person trips are set out in Tables 78 and 89 based on the modal splits in Table 6.

Table 8: Morning Peak Hour Person Trip Generation Forecasts

Mode of Travel	Base Year	5 Years	10 Years	Difference (base vs 10 years)
Car Driver	1016	881	813 745	-203 339
Car Passenger	122	163	190 203	+68 81
Public Transport	108	203	203 257	+95 149
Active Travel	54	68	108	+54
Motorbike	14	14	14	0

Mode of Travel	Base Year	5 Years	10 Years	Difference (base vs 10 years)
Working from Home	27	27	27	0
Other	14	0	0	-14
Total	1355	1355	1355	0

Table 9: Evening Peak Hour Person Trip Generation Forecasts

Mode of Travel	Base Year	5 Years	10 Years	Difference (base vs 10 years)
Car Driver	1273	1103	1018 233	-255 340
Car Passenger	153	204	238 255	+85 102
Public Transport	136	255	255 322	+119 186
Active Travel	68	85	136	+68
Motorbike	17	17	17	0
Working from Home	34	34	34	0
Other	17	0	0	-17
Total	1697	1697	1697	0

5.20-5.21. It should be noted that these targets and the initial measures and actions have been established based on predicted travel demand. As part of the monitoring and review process, travel to work surveys will be undertaken within three months of occupation of each unit. This will provide information on actual employee travel patterns, thereby enabling refinement of the specific measures and actions to best target opportunities for modal shift.

5.21-5.22. The modal shift targets for single occupancy car trips align with both EMG and Coventry Gigafactory sustainable transport targets. Therefore, reducing the car driver modal share from 75% to 65% within the first five years and then to ~~60~~55% within 10 years is considered realistic and deliverable. Ongoing monitoring and review will be necessary to ensure these targets are met. This is 5% lower than the value originally proposed and therefore commented upon by the ExA, and provides a more ambitious but still realistic target. The opportunity has also been taken to clarify the distinction between single occupancy trips and car sharers (as per paragraph 5.19 above)

5.22-5.23. Much of the mode shift will be achieved in the early stages of development, as good practice and travel habits are embedded from day one. This will be achieved through quality Travel Plan coordination/communication and the 'Day 1' availability of public transport services and a car sharing platform. The site benefits from a number of existing routes and opportunities for active travel and this will be further enhanced by phased improvements to active travel routes. It is anticipated that as the phases of HNRFI are built out, there will be more employees based on the development, and therefore more opportunities for car sharing. The provision is intended to embed positive travel habits from Day One.

5.23-5.24. The public transport modal share target accounts for both an enhanced public bus provision to Hinckley, Nuneaton, Coventry and Leicester, as well as Demand Responsive Travel (DRT) to improve connections with villages in Leicestershire. These proposals are further outlined in the following sections.

5.24-5.25. Based on these enhancements, a modal share target of 10% to 15% is considered reasonable for HNRFI. in the first five years after opening with a further 4% to the ten-year horizon. Operators, Arriva and Vectare, have confirmed this to be a realistic target given the proximity of the site and their experience of similar developments in the area. EMG has a reported mode share of 24%, which demonstrates that higher levels of patronage can be achieved. Consequently, it is considered that there is the opportunity to exceed the bus modal share targets by working in partnership with bus operators to ensure services and demand are best aligned. The service patronage and effectiveness of provision will be reviewed every year by the Travel Plan coordinator in conjunction with the Bus Operator and reported to Leicestershire County Council Highways and the Travel Plan Steering Group.

5.25-5.26. Car sharing is a clear opportunity for shift driven work sites. According to industry providers, a car passenger modal share of 12% is realistically achievable and can be higher if a good quality database is established amongst the HNRFI workforce, and opportunities for car sharing will increase as the development is built out and more employees are based on the scheme. Once the database matures, it is anticipated that the growth in car share will add a further 6% of staff to the car passenger numbers in the ten-year horizon.

5.26-5.27. Active travel modes combine walking and cycling. As outlined above, given that it is adjacent to both the strategic road and rail networks, the site is not in a location readily accessible to a large population who could travel on foot. Therefore, whilst the proposals will enable employees to walk to the site, it is unlikely that significant numbers will do so. This is demonstrated in the EMG modal share where less than 1% of employees walk to site. This is despite the provision of off-site enhancements to encourage such travel.

5.27-5.28. Whilst walking is unlikely to be a significant mode of choice for employees or significantly contribute to achieving the modal shift targets, both pedestrian and cycling opportunities are available, especially to Hinckley, Earl Shilton and Barwell, which are the most populated settlements and are within suitable cycling distance from HNRFI. With targeted interventions to encourage travel from these areas, a modal share of 5% to 8% from cycling and walking is considered achievable. This target is higher than the more remote EMG but lower than Coventry Gigafactory, which has a larger population within both walking and cycling distances. Consequently, it is considered realistic.

5.28-5.29. The above targets propose a reduction in single occupancy car use and a redistribution to sustainable modes of transport. The Applicant commits to delivery of a modal shift target of ~~7566%~~ to ~~6040%~~ on single ~~car~~-occupancy cars in 10 years. The Applicant seeks to achieve this through implementation of the STS and the commitments set out in Table 1 to promote car sharing and public transport services. The modal share targets will be reviewed and refined once the results of the first travel survey are available.

~~5.29-5.30.~~ There is a commitment to provide Employee travel packs within the Site Wide Travel Plan (document reference 6.2.8.2D2) and the commitment table 1 in this STS, which is covered by DCO requirements 8 and 9 respectively. The Travel pack information will be approved by Leicestershire County Council and supplied to each employee by the Site Travel Plan Co-ordinator which will contain details of walking, cycling and public transport, HNRFI DRT service, local amenities, shops and details of car sharing schemes operating at the site. Travel packs will be provided to each employee at HNRFI.

6. BUS OPERATOR CONSULTATIONS

Engagement from 2018

6.1. The previous consultant team (Hydrock) had held initial discussions with Arriva and Stagecoach in the Autumn of 2018. The engagement focused on the introduction of specific routes to the site and the options for timetabling around the shift patterns of the B8 Development (0600, 1400 and 2200). Comparisons to other strategic employment sites, such as Magna Park (Lutterworth), DIRFT and Swan Valley were used to illustrate options and potential drawbacks. These are summarised below.

Arriva

- 6.2. There was interest expressed by Arriva and they were able to assist in initial options. There was acknowledgement that the site and local area are poorly served at present.
- 6.3. Arriva representatives suggested it would be beneficial to introduce a more direct service that bypasses the local villages.
- 6.4. Origins of commuting trips were to be identified, and would need to link with the catchment information for the area.
- 6.5. Arriva suggested three options for service frequency:
- Hourly
 - Targeted shift hours (depending on occupier)
 - 20 minutes with additional capacity boost 3 times a day (as evidenced at Magna Park)
- 6.6. It was also suggested that the office provision within the buildings could introduce demand for a route that passes a rail station (e.g. Hinckley).
- 6.7. It was suggested that Arriva Click, a demand responsive app-based service, could be used for village services or as a trial run for the first phases of the development to gauge the levels of demand. Where a critical mass is then identified, a fixed bus service can be introduced. However, this service was subsequently withdrawn following re-award of the contract by LCC.

Stagecoach

- 6.8. Discussions with Stagecoach had reached a more advanced stage, with an outline proposal sent by their commercial team in December 2018. This included the following key points:
- Services should consider 10-year phasing of the site, based on a Monday-Saturday operation. Funding would reduce based on revenue from the fares under an agreed mechanism.
- 6.9. Two options were presented:
- Short service between Nuneaton and the site;

- Through service between Nuneaton and Leicester via the NRFI (recommended).
- 6.10. The short service would require 2 buses and the through service would need up to 4 buses to cover the key shift change demand.
- 6.11. Provision could be increased if demand is there. This is only achievable if businesses fully back the modal shift measures.
- 6.12. The timetabling for the through route would allow for a half hourly service between 05:30 and 06:45, then hourly up to 14:00 when half hourly services are run before returning to hourly up to 20:00 when the same pattern is repeated.
- 6.13. Catering solely for the 06:00, 14:00 and 22:00 shift changes estimated assumed costs for a reduced timetable. This could be run with 2 buses and split so buses did not cross through, i.e., one bus arrives from Nuneaton at the site at xx.45 to the hour and departs back to Nuneaton at xx.15 past the hour, and the separate bus arrives from Leicester at xx.45 to the hour and similarly returns at xx.15 past the hour.
- 6.14. Shifts at 06:00 and 22:00 are easier to cater for than 14:00 as things currently stand. The use of double-deckers could be considered, although Stagecoach has not operated any in the area for some years.
- 6.15. Provision between shifts was compared with DIRFT where there are concentrations of passengers at the key shift change times, there is also a steady low-level demand throughout the day with people who are working office hours or part time or heading for meetings. DIRFT currently has four buses per hour, all of which start at Rugby, and then of the four, two continue to Daventry, one continues to Northampton and one terminates at DIRFT III, but they are serving other local needs with people travelling to/from the various towns and villages.
- 6.16. Longer-term with the new Houlton housing development in the area, this should ensure the service grows. If the service is to be attractive to people not travelling to/from NRFI, a broadly hourly service would be required, and this is the basis of what Stagecoach currently provide to other similar locations.

Further Engagement – March 2021, April 2022 and November 2023

- 6.17. Following on from the engagement as outlined above, BWB approached Arriva Buses as the main existing service provider on the routes around the HNRFI site. Further detailed discussions were held around the potential service options and packages for the site, and the Applicant has a signed memorandum of understanding with Arriva for the provision of the enhanced X6 and 8 services. This took account of the recent pilot launched by LCC of the Demand Responsive Transport (DRT) south of Leicester.

Existing Arriva Services

- 6.18. Arriva provided useful feedback on their existing services in and around the HNRFI site:
- 158: unlikely to divert as the demand from the HNRFI is unlikely to replace the existing demand which would be lost through extension of the route.

- X6: A route acquired by Arriva in Aug 2020. This presents the route able to offer i) comparable journey times to car to encourage mode shift especially from large concentrations of population. ii) Little loss of time to existing customers. iii) Would be the most straight forward service to enhance provision- currently 90 min frequency, 6 days per week. 8: This service links Hinckley to Lutterworth via Magna Park and is the preferred route to link to Nuneaton. Arriva has suggested that this would be viable with an appropriate contribution to initially support the service.

Potential Routes and Other Considerations

Shift Only vs Shift and Interim Provision

- 6.19. There are cost savings based on the provision of shift change only services. However, from the initial views put forward by Stagecoach, through routes are preferred by the operators, as they have the opportunity to pick up additional passenger demand. The 50% increase in cost between shift only and the shift plus interim services is high, but could provide financial sustainability more quickly as revenues from the public increase between the shifts.
- 6.20. Suggested routes from both Arriva and Stagecoach cover links from Nuneaton and Leicester City Centre. These tend to be on the most direct routes, making use of the M69. Arriva already operate an express route between Nuneaton and Leicester (158), as well as Coventry and Leicester (X6).
- 6.21. There are advantages to using Arriva's existing routes and boosting shift changeover capacity. The new services presented by Stagecoach offer an ability to shape the service to HNRFI needs.

Rail & Bus Connectivity and Timetable Integration

- 6.22. Integration between modes can be achieved if dwell times for passengers are kept low.
- 6.23. Initial reviews of the timetables for Hinckley services from both Leicester and Nuneaton do not suggest a good correlation with the shift patterns. The first train into Hinckley from Leicester is at 06:37 and from Nuneaton it is 05:54. The timetables for both origins are limited to half hourly services in the peak hours reverting to an hourly service outside of these times.
- 6.24. However, a connection between the HNRFI site and Hinckley Rail Station is possible for office-based staff working a more regular 9-5 pattern. This type of service will use the demand responsive routes discussed later in this document.
- 6.25. In addition a connection between the HNRFI site and the Hinckley Bus station will be served by a proposed diversion and extension of the number 8 service discussed further in paragraph 7.15.

Vectare Engagement- DRT Services

- 6.26. From April 2022 the DRT services operating around New Lubbethorpe and the south-east of Leicester were awarded to Vectare, a transport and technology business with

in-house coding expertise. They replaced Arriva Click as the incumbent DRT provider operating under their 'NovusFlex' brand.

- 6.27. Engagement was held with the Vectare technical lead to discuss options for the HNRFI site and how it would connect with the wider DRT offer in south Leicestershire. Further information is contained in Section 7 under Bus Strategy.
- 6.28. The proposed Hinckley service will be a "many to one" bespoke DRT service connecting the rural hinterland around the proposed NRFI Hinckley site to employment locations within the site. The service will support multiple drop off / pick up points within the site, and bus stop poles, flags, shelters and timetable display cases are to be provided to support this. This service would build upon, but sits separately to the NovusFlex pilot currently being run by Vectare on behalf of Leicestershire County Council. Vectare has confirmed that the service can be easily scaled from an initial provision at the earliest stages of the occupation of the site, expanding as further buildings and occupiers become established. The core commitment being to have provision from day one to embed preferred travel behaviour patterns and align with the Travel Plan intentions.
- 6.29. The Applicant has a signed memorandum of understanding with Vectare for the provision of the DRT many to one service for the HNRFI.

Euro VI complaint and/or Ultra Low Emission Vehicles

- 6.30. Public Transport Operators serving the site will be asked to make reasonable endeavours to maximise the use of Euro VI compliant buses and or ultra-low emission vehicles within fleets operated by them that access the HNRFI.

7. BUS STRATEGY

Bus Infrastructure

- 7.1. The construction of the A47 link Road between M69 Junction 2 and the B4668 creates fast and easy linkage to the southern end of the HNRFI site. Dedicated bus infrastructure is to be provided on the A47 Link Road prior to first occupation. This includes a bus interchange with a purpose-built fully enclosed shelter with real time information displayed and layby on the eastbound carriageway (northern side of the A47 link road, with direct access on to the main HNRFI site), providing full kerbed separation from the link road. The westbound bus stop will also have a layby and bus shelter and will be connected to the site via a signal-controlled pedestrian crossing.
- 7.2. These arrangements have been revised from those originally proposed in response to the Transport Working Group's comments that the bus interchange should be within the HNRFI and not on the southern side of the A47 Link Road.
- 7.3. Upon first occupation, the DRT and scheduled public bus services will use these A47 Link Road stops and then likely slingshot around Roundabout 3 back towards Junction 2, M69 or Roundabout 2 towards the A47. As soon as a section of the internal loop road is constructed (either with the provision of a turning circle or through the construction of the loop back to the A47 Link Road), scheduled services will have the opportunity to internally access the site, with further bus stops, shelters and live travel information provided throughout the development to allow passengers to board and alight within 400m of every building.
- 7.4. Whilst it is expected that the DRT services could enter the HNRFI, it is unlikely that scheduled bus services would enter the site until passenger demand supports it. Consequently, the Applicant will provide a private shuttle bus to route between the proposed bus interchange on the A47 Link Road and internal bus stops on demand.
- 7.5. The timetable for this private service will be established to coincide with the arrival and departure times of scheduled bus services and will be operational until such time as the scheduled bus service provision routing through the site allows for its removal.

Initial Bus Provision

- 7.6. As well as employees working standard office hours, B8 warehousing typically operate the following shift patterns:
 - 06:00 – 14:00;
 - 14:00 – 22:00;
 - 22:00 – 06:00.
- 7.7. Travel demand is typically highest at shift changes and therefore it is important that bus provision covers these periods in addition to typical office hours. The HNRFI will be delivered on a phased basis and as such passenger demand will increase over time. However, early provision of these services is not only important to cater for predicted passenger demand, but also to give potential new employees clarity on their travel

choices during the recruitment process. Thereby, establishing sustainable travel habits from the outset.

7.8. To provide and maintain a comprehensive bus provision to HNRFI, the Applicant will enter into private service agreements with local bus operators, to provide minimum level of service to the following locations from first occupation:

- Coventry and Leicester
- Hinckley and Nuneaton (including both railway stations and Hinckley Bus Station)
- Surrounding Villages (via DRT)
- South East Leicester (private service)

7.9. Bus provision would coincide with office hours and standard warehouse shift changes on all HNRFI working days (the service will not operate on Christmas Day, Boxing Day and New Year's Day) and would be maintained as the minimum level of services going forward. Details of these bus services are set out in the sections below and summarised in Table 10.

7.9.7.10. Indicative timetables are included in **Appendix 6**.

7.10.7.11. Each employee at each unit will be able to apply for a 6-month free bus pass within 6 months following first occupation of the relevant building. This bus pass will be valid for the public bus services (currently the X6 and No 8 bus services) and the Private service, administered through the Travel Plan Coordinator who will promote the availability of bus passes to new employees. This employee provision is in line with the standard definition and provision from Leicestershire County Council.

7.11.7.12. Consequently, the Site Wide Travel Plan Coordinator will promote the availability of these passes and any other local or national discount schemes intended to encourage travel by public transport.

Coventry and Leicester City Areas (current service X6)

7.12.7.13. The X6 service is an existing route which links to the core areas for employee catchment, including Leicester City and Coventry. It is an express route which offers good alternatives to single car trips. This service will be the initial cog in the transport strategy as a service is able to adapt quickly to potential demands of the site.

7.13.7.14. The X6 service has potential to pick up core demand from Coventry and Leicester city areas. Minimal stops and routing via the M69 present the best service to encourage modal shift from the car. Existing services will need to be extended to cover the 6am and 10pm shifts and there may be a need for additional capacity during the day for the 2pm shift change. This will be adapted and adjusted through the build out phase of the development. Based on the current timetabling there is a minimum level of provision of one bus every 60 minutes in each direction. It is envisaged that the bus arrivals at the interchange will be scheduled to arrive and depart at convenient times for shift pattern changes for example, this could mean an arrival at the interchange at approximately 1.30pm for a shift starting at 2pm and the next scheduled service to arrive at the interchange at approximately 2.30pm to collect those who have finished their shift.

7.14.7.15. Based on the current timetable and standard warehousing shift patterns, there would be an incremental increase in service (based on the current level of bus service operating) of circa 7 hours per day. Service provision will extend seven days a week from first occupation between 04:00 and 00:00. As the site develops, an alternative scenario will put an additional vehicle into the cycle to increase the frequency around shift changes (i.e. to minimise the wait between people arriving at their place of work and their shift starting, or finishing their shift and the bus departing to take them home). An indicative timetable is included within **Appendix 6**. The service patronage and effectiveness of provision will be reviewed annually by the Travel Plan Coordinator in conjunction with the Bus Operator and reported to Leicestershire County Council Highways and the Travel Plan Steering Group. Annual reporting will enable identification of when demand will result in requirement for a second bus.

7.16. A further private service is proposed to cover core shift changes to the SE of Leicester City to cover areas that are above 60 min travel time to the site and where identified demand is predicted. Appendix 7 contains catchments to demonstrate likely demand. This is proposed to operate for key shift changeover times across the 7-day operational period. Discounted passes for 6 months are proposed as per other public transport provision.

Nuneaton and Hinckley (current service 8)

7.15.7.17. Given the identified potential for bus trips from both Nuneaton and Hinckley and the wider opportunity provided through access to the rail network via their rail stations, a regular service will be provided to link the HNRFI with these towns.

7.16.7.18. The Service 8 which links Hinckley with Lutterworth and Magna Park has been identified by Arriva for extension into Nuneaton and a diversion into the HNRFI. There is a clear commitment from the applicant to connect the site to Nuneaton directly as part of this Strategy. This will be via existing Arriva services. Extensions to existing services are achievable and the current timetabling is geared towards shifts at Magna Park but can also accommodate shift changes at HNRFI. An indicative timetable is included within **Appendix 6**, service provision from first occupation will be seven days a week between the hours of 04:30 and 23:20. Based on the current timetabling there is a minimum level of provision of one bus every 60 minutes in each direction. It is envisaged that the bus arrivals at the interchange will be scheduled to arrive and depart at convenient times for shift pattern changes. For example, this could mean an arrival at the interchange at approximately 1.30pm for a shift starting at 2pm and the next scheduled service to arrive at the interchange at approximately 2.30pm to collect those who have finished their shift. The service patronage and effectiveness of provision will be reviewed annually by the Travel Plan Coordinator in conjunction with the Bus Operator and reported to Leicestershire County Council Highways and the Travel Plan Steering Group. Annual reporting will enable identification of when demand will result in requirement for a second bus.

Surrounding Villages

7.17.7.19. Introduction of DRT as part of a 3-year trial through LCC has been ongoing as part of the national bus strategy; Vectare, who run the existing service have proposed options to provide a 'Many to One' DRT service to access the site. The DRT proposal in this STS is a stand-alone service to meet the needs of HNRFI, and is not part of the LCC 3

year trial DRT service. This would allow groupings of individuals to access the HNRFI at specific times of day without the reliance on fixed route services. It allows greater flexibility in the early stages of the project and may lead to identification of fixed routes where demand is highest.

~~7.18-7.20.~~ It is important to note that the DRT is a private 'Many to One' service which will operate to the HNRFI site. This type of service is more straight forward to control than a public DRT_service which needs to satisfy multiple origins and destinations within a defined area. This has led to the fixed route paths implemented as part of the Lubbesthorpe scheme. The HNRFI scheme journeys will have a fixed destination or origin (the Site) for all passengers depending on which leg of the journey they are on. This will lead to less conflict on journeys, with most being inbound or outbound depending on the time of shift. As mentioned above, ongoing monitoring will help identify where there are issues with capacity to implement plans to rectify.

~~7.19-7.21.~~ The service will operate between 04:00 and 00:00, seven days a week. The service will not operate on Christmas Day, Boxing Day and New Year's Day. The length of service day is comprehensive to enable all journey opportunities that may be required.

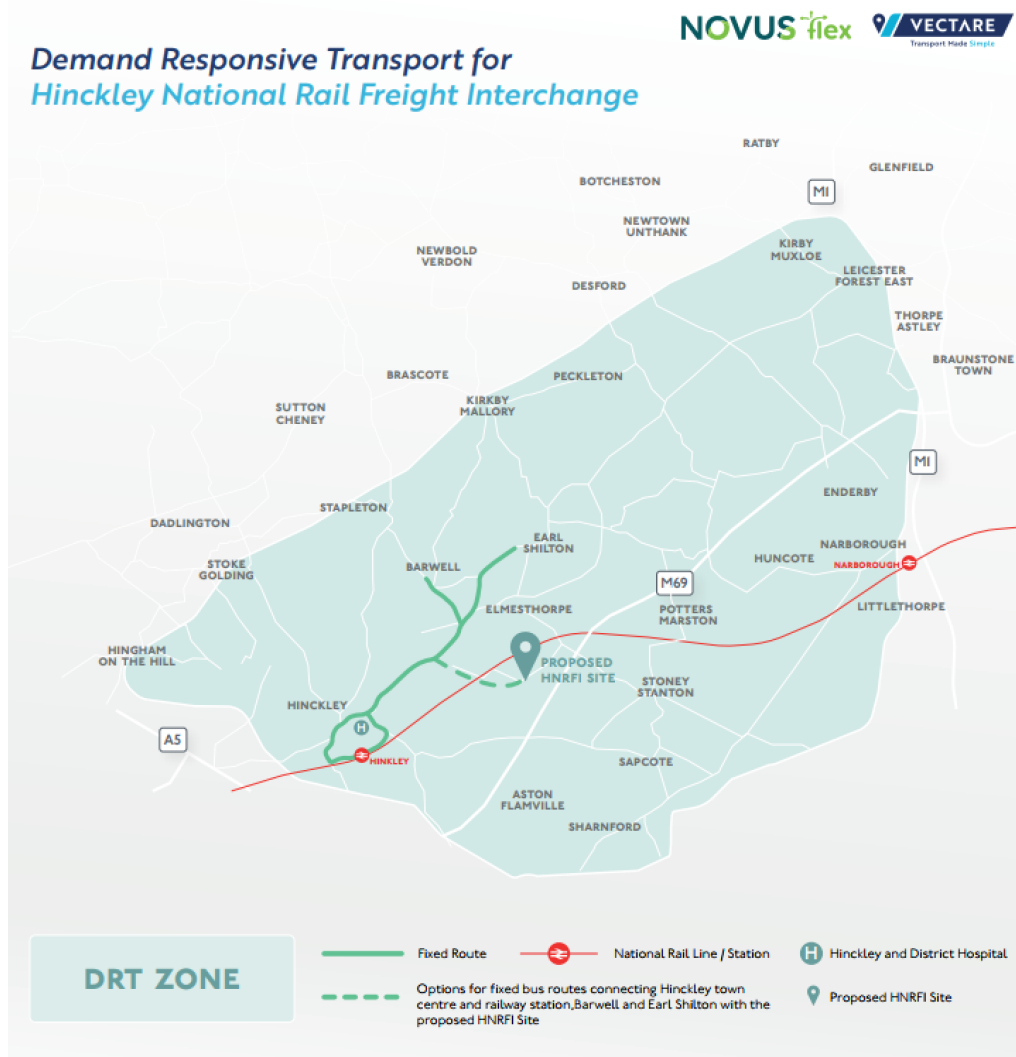
~~7.20-7.22.~~ The Travel Plan Co-ordinator will provide access for employees resident in the villages and towns covered by the DRT to a DRT app hosted by the DRT operator. Employees will be able to specify and request an arrival time at HNRFI using the DRT app, provided that the request is made at least 24 hours prior to the arrival time. The DRT app will notify the requesting employee of a pick-up time at a specified location or locations within the villages and towns covered by the DRT. The service will link into the interchange at the HNRFI site where the passengers can then use the site shuttle bus to access their specific building, and bus stop poles, flags, shelters and timetable display cases are to be provided to support this.

~~7.21-7.23.~~ An employee requesting an arrival time less than 24 hours in the future will be able to use the DRT, however their journey time may be longer to accommodate existing pick-ups defined by employees who have requested the service with at least 24 hours notice.

~~7.22-7.24.~~ The Applicant has a signed memorandum of understanding with Vectare for the provision of the DRT 'many to one' service for the HNRFI. The service patronage and effectiveness of provision will be reviewed annually by the Travel Plan Coordinator and reported to Leicestershire County Council Highways and the Travel Plan Steering Group. Vectare has confirmed that the service can be easily scaled from an initial provision at the earliest stages of the occupation of the site, expanding as further buildings and occupiers become established. The core commitment being to have provision from day one to embed preferred travel behaviour patterns and align with the Travel Plan intentions.

~~7.23-7.25.~~ As shown in Figure 12, The service will serve a zone which is predominantly to the north and east of the site, bounded by the M1 motorway in the east, and the A5.

Figure 12: Suggested DRT based Service Zone (source: Vectare)



7.24.7.26. A potential second phase of DRT would increase the number of buses in circulation within the prescribed zone. Travel Planning analysis and a review by Vectare will also test the potential for newly fixed routes, where DRT is most popular. The service patronage and effectiveness of provision will be reviewed annually by the Travel Plan coordinator in conjunction with the DRT Operator and reported to Leicestershire County Council Highways and the Travel Plan Steering Group. Annual reporting will enable identification of when demand will result in requirement for additional DRT service provision. Provision can be scaled as further buildings and occupiers become established. An outline of how the service provision could grow would be provision of one service in year one, two services in year three and three services by year eight, however the annual review will decide the appropriate level of provision.

Initial Bus Provision Summary

7.25.7.27. A free 6 month bus pass will be available to the first employees at each building on first occupation in the first six months, for the public bus services (currently defined as the X6 and 8) and the DRT/Private services. The employees are as defined by the standard definition and provision from Leicestershire County Council. Consequently, the

Site Wide Travel Plan Coordinator will promote the availability of these passes and any other local or national schemes to encourage bus travel.

~~7.26.~~ Public transport commitments are summarised below in ~~and illustrated in~~ **Figure 13.**

~~7.28.~~ Table 10 and illustrated in Figure 13.

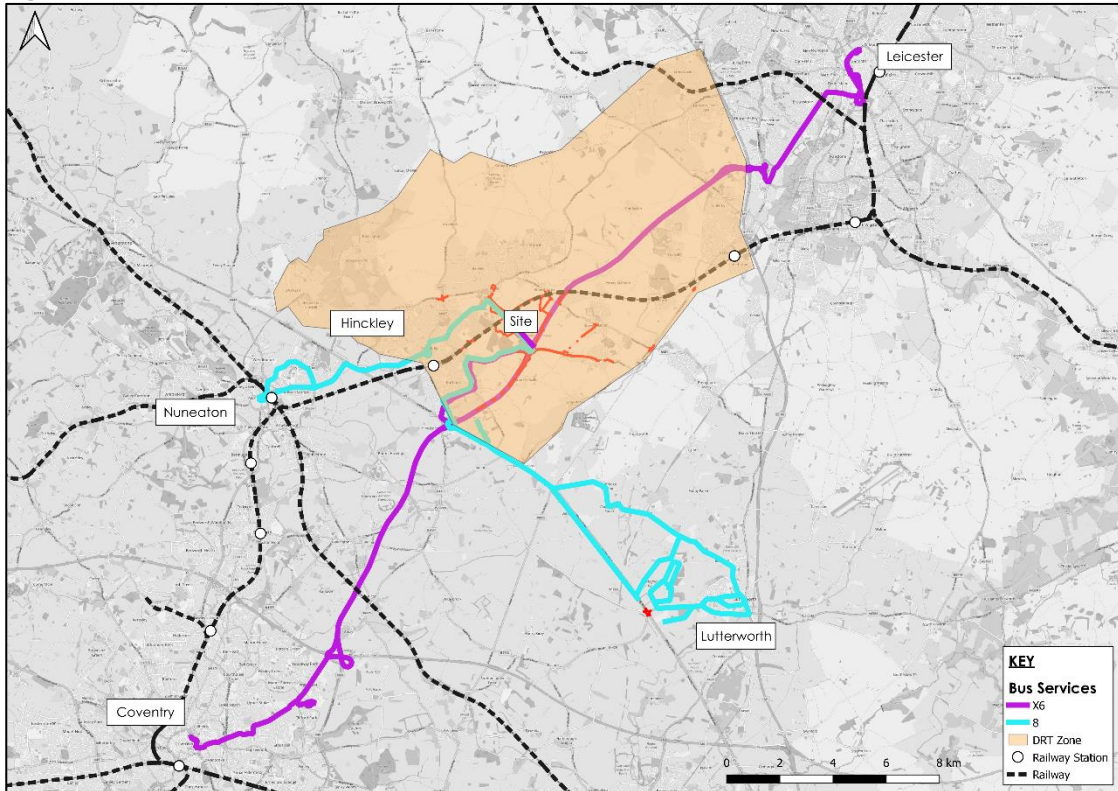
Table 10: Public Transport

Type of Service	Geographical Area	Current Timetable	HNRFI Services	Discount Scheme Potential
First Occupation				
X6 (existing service)	<ul style="list-style-type: none"> Coventry Leicester (and suburbs) 	60 mins frequency Good coverage at traditional office hours around HNRFI; 8am and 5pm	Additional 7 hours of services to cover standard warehouse shift change over times- likely 4am to 10pm, though subject to demand and travel planning.	Yes; Each employee at each unit will be able to apply for a 6-month free bus pass within 6 months following occupation of the relevant building for the public bus services through the travel plan coordinator who will promote the availability of bus passes to new employees.
Nuneaton Service (provisionally the existing Arriva 8)	<ul style="list-style-type: none"> Hinckley Lutterworth Nuneaton 	Early shift patterns included typically 60 mins though day	Extend this through to Nuneaton at times appropriate for shift changes.	Yes; Each employee at each unit will be able to apply for a 6-month free bus pass within 6 months following occupation of the relevant building for the public bus services through the travel plan coordinator who will promote the availability of bus passes to new employees

Type of Service	Geographical Area	Current Timetable	HNRFI Services	Discount Scheme Potential
Vectare (Demand responsive travel)	South Leicester Area covering Fosse area	Novus Fosse now a fixed route, every 30 mins to the North of the site	Introduction of 'Many to One' private service Starting with subsidy for one bus in year one with potential increase in provision, rising to two services in year 3 and three Services by year 8, to include areas North and East of the site, subject to the outcomes of the annual review.	Offers available through Vectare <u>Each employee at each unit will be able to apply for a 6-month free bus pass within 6 months following occupation</u>
<u>Private Bus Provision to SE Leicester</u>	<u>SE Leicester City area</u>	<u>Private Bus to cover key shift changes</u>	<u>New Service</u>	<u>Each employee at each unit will be able to apply for a 6-month free bus pass within 6 months following occupation</u>
Future Phasing				
X6 (Arriva)	As Above	As Above	Additional vehicle to cover increased frequency at shift change over 60 mins	As above

Type of Service	Geographical Area	Current Timetable	HNRFI Services	Discount Scheme Potential
Nuneaton Service	As above	As above	Options to enhance frequency following extension of the service to Nuneaton.	As above
Vectare Services (Demand responsive travel)	South Leicester Area Covering Lubbethorpe and Narborough to the City Centre	NovusFlex DRT Flexible from early morning to late night. Bespoke Service for HNRFI	Dedicated 'many to one' demand responsive services using up to 3 new vehicles within the designated zone operating under a 4am to midnight basis	Offers available through Vectare <u>As above</u>
Rail connections; Hinckley	<ul style="list-style-type: none"> Nuneaton Leicester Hinckley 	Half hourly in peak hours 0750, 0818, 0850 1647, 1728, 1758	Rail and bus link up with DRT services, part of business package.	Offers available through Vectare <u>Each employee at each unit will be able to apply for a 6-month free bus pass within 6 months following occupation</u>

Figure 13: Future HNRFI Public Transport Network



Bus Provision Review

7.27-7.29. As HNRFI will be delivered on a phased basis, passenger demand will increase over time and the requirements for bus provision will evolve. Therefore, as part of the Travel Plan review, every year following first occupation the Site Wide Travel Plan Co-ordinator will analyse bus patronage and the effectiveness of the bus provision in achieving modal shift based on staff travel surveys. These will be discussed and agreed with the Local Highway Authority and Travel Plan Steering Group and will evolve as the development progresses and units are built out.

7.28-7.30. In the event the review demonstrates that car driver target modal share is not being achieved, provision for additional and/or alternative public transport will be made to reflect the identified requirements.

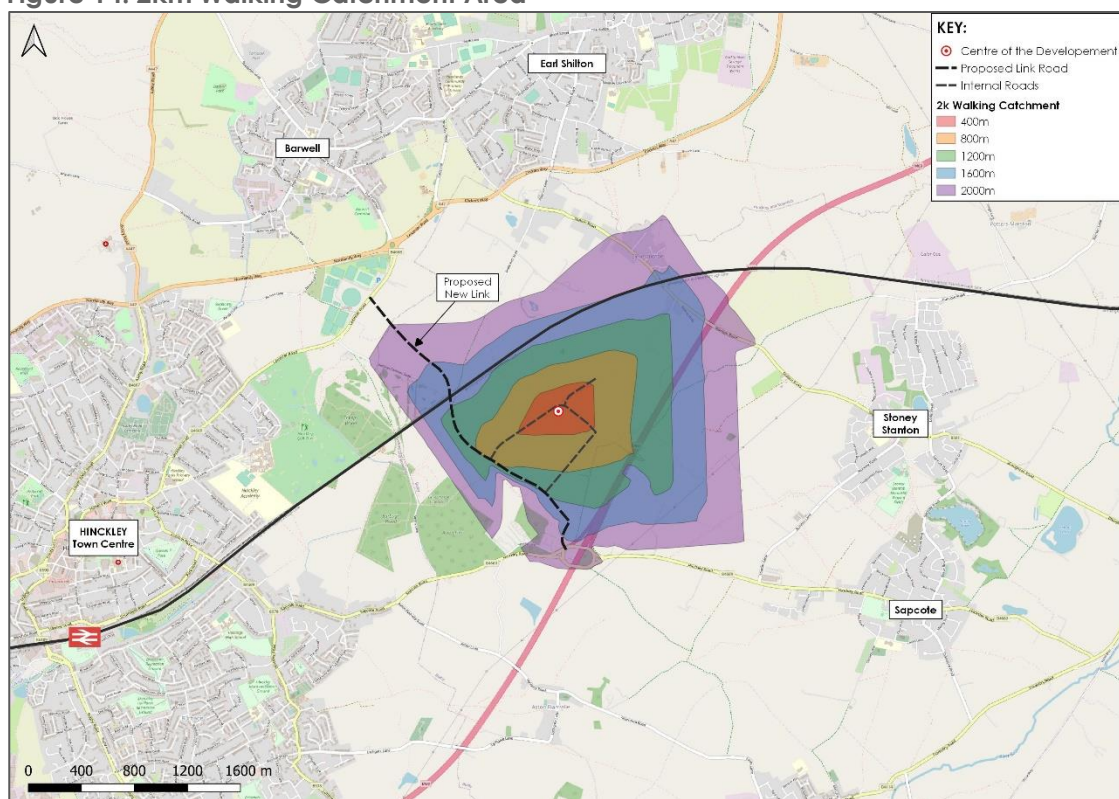
8. WALKING AND CYCLING

Walking

8.1. The Guidelines for Providing for Journeys on Foot (GPJF) document describes acceptable walking distances for pedestrians without mobility impairment. GPJF suggests that the maximum walking distance for town centres is approximately 800m, commuting/schools is approximately 2km and for other facilities is approximately 1.2km. The document states that an average walking speed of approximately 1.4m/s (5km's/hr) can be assumed.

8.2. **Figure 14** illustrates the 2km walking catchment area.

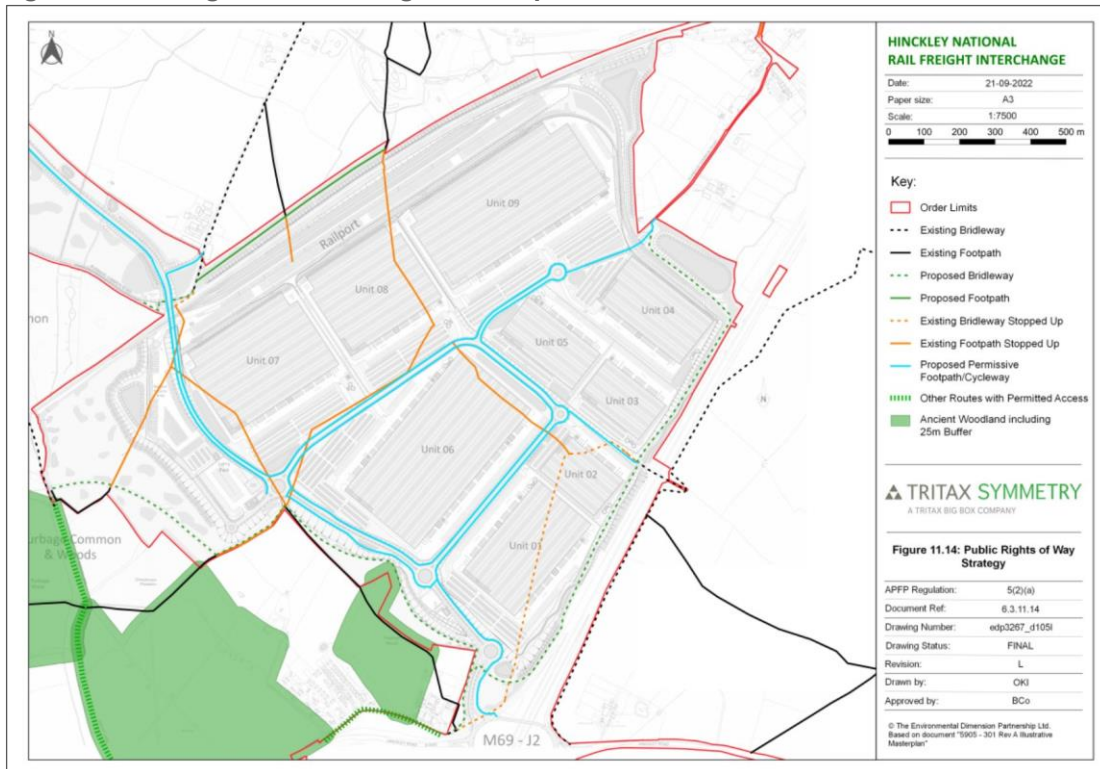
Figure 14: 2km Walking Catchment Area



8.3. As can be seen in **Figure 14** above, there is little population within walking distance of the site, reflecting the locational requirements of the SRFI site and aligning with paragraphs 15 and 30 of Circular 01/22 summarised in Section 2. Given the nature of the development and low walking modal share at similar schemes such as EMG, it is predicted that few employees will walk to HNRFI and measures to encourage such travel are unlikely to materially contribute to modal shift. Consequently, the mode share in **Table 4** have been adjusted accordingly.

8.4. **Figure 15** illustrates how the affected Public Rights of Way running through the site will be complemented with new infrastructure for non-motorised users and the site permeability will be retained. For further information please refer to the Public Rights of Way Strategy (ES Appendix 11.2 Public Rights of Way Appraisal and Strategy, Document Reference 6.2.11.2)

Figure 15: Changes to Public Rights of Way



- 8.5. In addition to the above, the proposals will close rail level crossings to improve public safety at additional locations outside the main HNRFI Site within the wider DCO limits. These crossings include The Outwoods (U8/1) where a pedestrian footbridge will be installed and the level crossing closed. Alternative routes are proposed to allow level crossings to be closed at Elmesthorpe (T89) and Thorneyfields (U17). These are shown on Figure 11.5 of the Public Rights of Way Strategy – Rail Crossings (Document Reference 6.3.11.15, APP-299).
- 8.6. Existing pedestrian routes are available from the site to the nearest communities of Hinckley, Burbage, Earl Shilton, Barwell, Elmesthope, Sapcote and Stoney Stanton. It is accepted that facilities to areas such as Sapcote and Stoney Stanton are below current LCC highway design standards. However, these are very lightly used and consequently would still provide adequate routes for the limited number of employees predicted to walk to the site from these locations. Enhancements to these routes on the basis of predicted usage would not be justified on environmental impacts and cost viability basis.
- 8.7. It is apparent that there are several locations where pedestrian facilities are below current design standards and footway widths are further reduced by poor maintenance and overgrown vegetation. Consequently, the Applicant proposes to provide LCC with an audit of these locations prior to commencement of the first building, so that maintenance can be undertaken prior to first occupation.
- 8.8. Walking improvements at HNRFI focus on accessibility of bus stops and the internal site layout will include direct and safe walking routes towards them. All buildings will be located within a 400m walk of a bus stop, which would be high quality in nature, with live timetable information and bus shelters.

8.9. PRoW routes around the site will be diverted or reinstated to LCC standards. This will provide opportunities for leisure connections to surrounding areas and improved surfacing and potential improvements to links north to Elmesthorpe are included in the cycling section below, which will benefit both pedestrians and cyclists.

Cycling

8.10. Local Transport Note (LTN) 1/04 states that there are limits to the distances generally considered acceptable for cycling. The mean average length for cycling is 4km (2.4 miles), although journeys of up to three times this distance are not uncommon for regular commuters and the use of e-bikes is becoming increasingly common for commuting. It is widely considered that cycling has the potential to substitute for short car trips, particularly those under 5km, and form part of a longer multi modal journey by public transport. Cycling is therefore an important journey to work mode that has the potential to substitute for short car journeys.

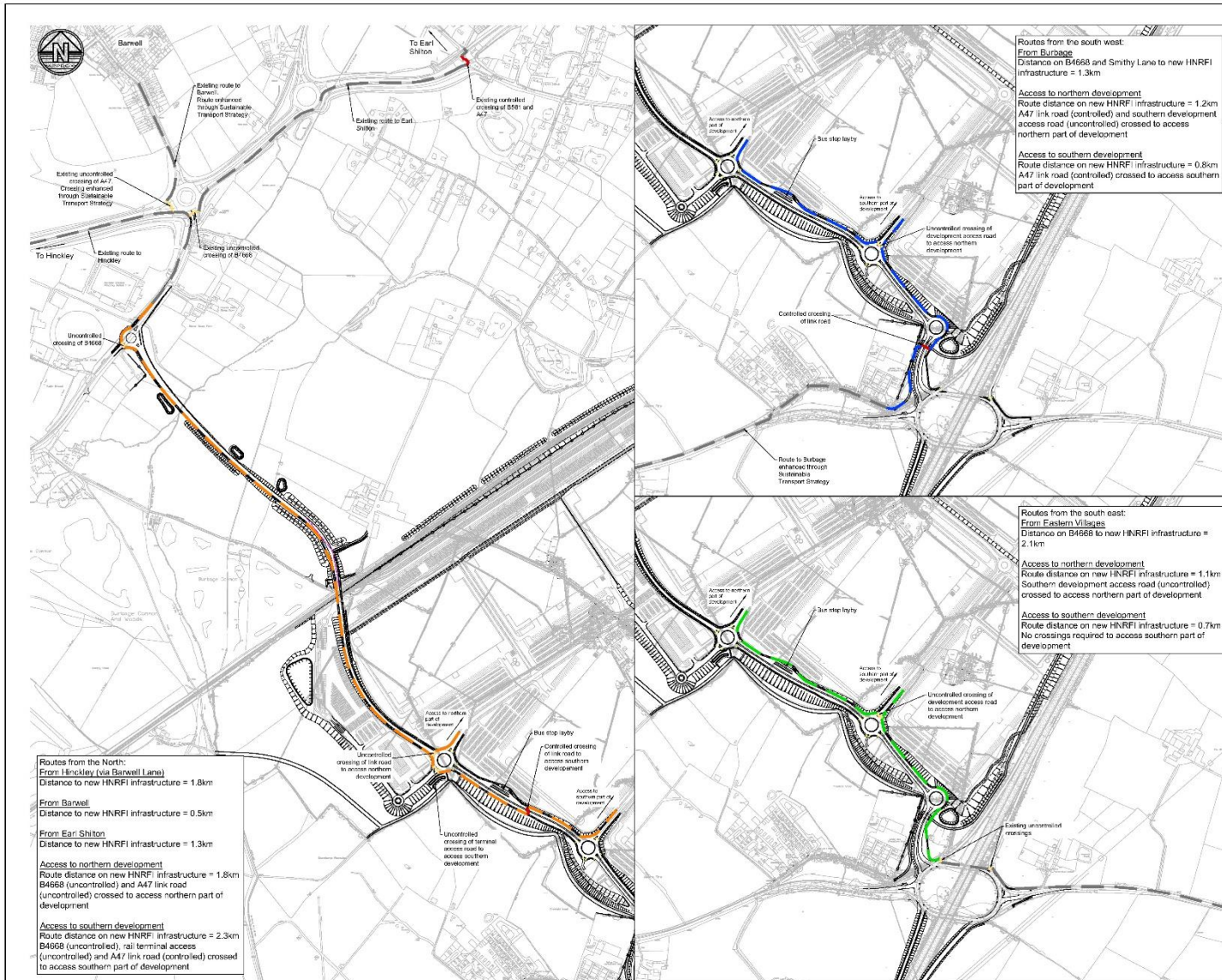
8.11. The cycling catchment area is shown in **Appendix 2**. It demonstrates that there is a wide and disperse area within cycle distance of the site with Hinckley, Burbage, Barwell, Earl Shilton and Nuneaton the most attractive areas. Consequently, these are considered the most appropriate areas for improvement, particularly given that travel from the wider cycle catchment would also be covered by the DRT zone.

Cycle Proposals

8.12. The Applicant will provide the following for HNRFI cyclists:

- The buildings on the site are to be designed to BREAAAM excellent standards and with cyclists in mind. Covered, secure and accessible cycle parking, including e-bike charging will be provided and monitored for adequacy. All facilities provided will be in line with LCC's cycle parking standards and local authority planning standards.
- Showers and changing facilities will also be provided in all units.
- Travel Plans will include a range of measures for occupiers to tailor for their workforce. This will include the option to participate in a Cycle to Work scheme, Bike User Groups and national promotion events such as Cycle to Work Day.
- A network of pedestrian/cycle routes are proposed throughout the site, which would connect to a footway/cycleway on the southern side of the A47 Link Road to provide direct cycle connections to Identified Hinckley Cycle Route 5 on Leicester Road. Connections would also be provided to Smithy Lane and Burbage Common Road. New connections will be delivered to LCC standards, where deviation from this might be required this will be agreed in advance with LCC.
- In agreement with LCC, wayfinding cycle signage will be provided at key locations between HNRFI and the main catchment areas of Hinckley, Burbage Earl Shilton, Barwell and Elmesthorpe via the identified Hinckley Cycle Routes
- The Applicant will also use reasonable endeavours to reach agreement with the Station operators for the enhancement of covered bike stands at Hinckley and Narborough Stations following the first occupation (beyond 105,000 sqm).

8.13. The proposed footway cycleway proposals, crossing facilities and bus layby interchange on the A47 Link Road are set out on the Outwood Level Crossing Footbridge – Illustrative Design (document reference 2.32, REP5-006), extract below, which also highlights the routes and distances to the new infrastructure from local settlements.



- Notes**
- All new roads are shown. All dimensions are to be checked against the 2015 Planning Policy Framework.
 - The location of the rail freight interchange and all other facilities, including the rail freight interchange, are shown in the plan.
 - All crossings are shown. All crossings are shown. All crossings are shown.
 - All dimensions are shown. All dimensions are shown.

Legend

- New HNRFI infrastructure from the north
- New HNRFI infrastructure from the south west
- New HNRFI infrastructure from the south east
- Uncontrolled crossing
- Controlled crossing
- Existing roads

Issue	Revised on 05/05	Rev	001
Issue	Revised on 05/05	Rev	001

ISSUES & REVISIONS

BWB
BWB GROUP COURTESY

BWB Inquire: 0121 233 9522
Larkin: 0121 233 9522
Larkin: 0121 233 9522
Larkin: 0121 233 9522
Larkin: 0121 233 9522

TRITAX SYMMETRY
A TRITAX BIG BOX COMPANY

HINCKLEY NATIONAL RAIL FREIGHT INTERCHANGE

HNRFI INFRASTRUCTURE FOOTWAY/CYCLEWAY LINKS

Date:	3/12/2024	Project:	0121 233 9522
Drawn by:	YTT/2024	Issue:	02/22/24

PRELIMINARY

HNRFI-BWB-GEN-XX-SK-SK155 S2 P01

Potential Future Enhancements- Analysis

- 8.14. The above proposals demonstrate that there is good cycle access to the site from the main identified catchment areas using existing routes connecting to the HNRFI infrastructure. However, following further consultation with the Highway Authorities within the Transport Working Group potential future enhancements are set out below and shown indicatively in **Figure 16**.
- 8.15. These routes were investigated further for DCO Deadline 4 to include design, delivery and high level financial viability analysis, with this assessment following the introduction of the potential enhancement schemes considered in subsequent sections of this chapter. The Applicant is committed to providing enhanced routes to the site for those areas where cycling demand is likely to be highest.

Enhanced Route to Barwell

- 8.16. An existing traffic free route is available to Barwell via Barwell Lane (Hinckley Cycle Route 4). However, there is the potential to implement improvements to provide a more direct route via The Common. This would involve the introduction of a Toucan crossing on the A47 (Enhancement 1), extension of the existing footway/cycleway by approximately 50 metres and the introduction of a gateway feature on entry to the urban area (Enhancement 2). This could be in the form of a northbound carriageway narrowing with southbound priority to safely introduce cyclists back onto the carriageway. This will also provide linkage improvements to Barwell and Earl Shilton SUEs.

Enhanced Route to Elmhurst

- 8.17. Whilst an existing traffic free route is available via the A47 (Hinckley Cycle Route 1), crossing facilities could potentially be implemented on the B581 to provide employees with routes to Elmhurst via Bridle Path Road (Enhancement 3).

Enhanced Route to Stoney Stanton and Sapcote

- 8.18. A connection to Stoney Stanton through the introduction of a shared footway/cycleway within highway boundary on the B581 (Enhancement 4a). The main benefits are to connect the site to Stoney Stanton via an off carriageway footway/cycleway. The route from Burbage Common Road to Stanton Lane on the B581 is currently shown as a quieter route on LCCs cycle maps.
- 8.19. A connection to Sapcote through the introduction of a shared footway/cycleway within highway boundary on the B4669 (Enhancement 4b). The main benefits are to connect the site to Sapcote via an off carriageway footway/cycleway.

Enhanced Route to Hinckley

- 8.20. A cycle route is available to Hinckley town centre and the railway station via Hinckley Cycle Routes 3 & 4. This involves HNRFI cyclists travelling northbound on the B4668 Leicester Road to join the A47 before routing into Hinckley via the Barwell Lane traffic free route. The following options have been considered to potentially provide a more direct route:

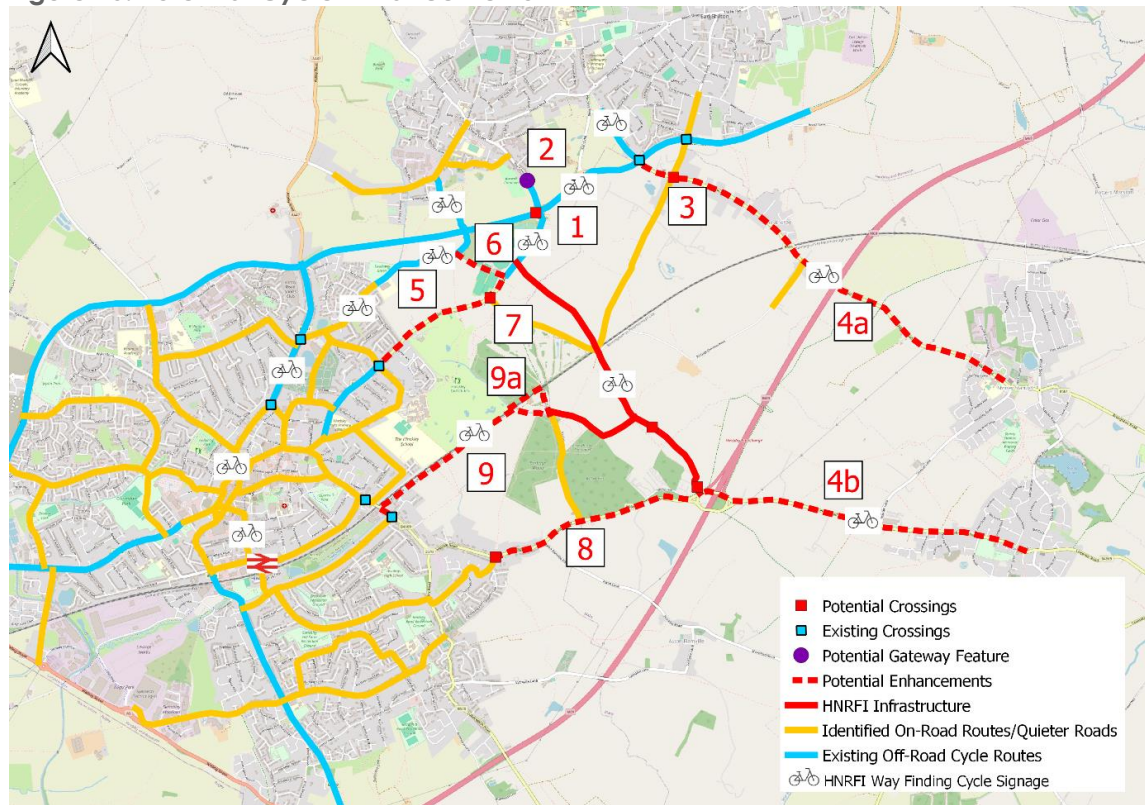
- Option 1 – The speed limit on the B4668 Leicester Road could be reduced from 50mph to 40mph following construction of the A47 Link Road roundabout to improve the environment for pedestrians and cyclists. This could be undertaken alongside a scheme to maximise the width of the existing footway on the western side of the B4668 Leicester Road within the highway boundary to enhance connections to the existing footway/cycleway at Stonegate Drive (Enhancement 5).
- Option 2 – The 400 metres of Bridleway U9/1 could be upgraded with new surfacing to provide a more direct route between the B4668 Leicester Road and Barwell Lane (Enhancement 6) Crossing facilities could also provide a better route via Burbage Common Road if Enhancement 6 is implemented (Enhancement 7).

Enhanced Route to Burbage

8.21. Two options are being investigated for improving the route to Burbage:

- Option 1 – A footway/cycleway could be provided within highway boundary on the B4669 for the 1.3 km between Winchester Drive and Smithy Lane, with cyclists joining the section of Smithy Lane alongside M69 Junction 2 and connecting to the site access infrastructure. An uncontrolled crossing point on the B4669 Sapcote Road would provide access to Winchester Drive and cyclists would continue on the quieter carriageway along Winchester Drive to connect up with the wider Hinckley cycling network (Enhancement 8).
- Option 2 –Bridleway U11/2, PROW 52/3 & PROW 52/4 could be upgraded to a suitable cycle track to provide the most direct route to Hinckley and Burbage via Outwoods. The route is largely suitable for cyclists but would benefit from improved surfacing and would require upgrading from footpath to bridleway (including requisite third party consultation and approval) from the Outwoods level crossing to the connection to Smithy Lane within Burbage Common (Enhancement 9). There is also an alternative route (9a), which would connect under the railway at U54/1 and back onto Bridleway U54/3 through the woods.

Figure 16: Potential Cycle Enhancements



Viability Assessment

- 8.22. It is worth reiterating that the existing baseline position of establishing cycle and pedestrian connectivity from the site to existing cycle infrastructure is wholly appropriate and proportionate to achieving the increase in Modal Split Targets sought through Active Travel measures.
- 8.23. Following discussion with the Transport Working Group, a further review of a number of other potential cycle links has been undertaken. Drawings are included in **Appendix 5** which include identified routes and design points and provide an initial view on the technical viability of each route.
- 8.24. The potential enhancements have considered the active travel catchments in terms of the existing and proposed population within distances from the site centroid, including sustainable urban extensions (SUEs) at Barwell and Earl Shilton. This has provided a clear picture of the likely attractiveness of walking and cycling routes and where the priority for investment in upgrades should be focussed to maximise potential usage by these modes.
- 8.25. A detailed review of each route is included in a table within **Appendix 4** which sets out the criteria for sifting the routes. **Table 1011** below provides a summary of the recommendations.

Table 11: Viability Summary Table

Option Number	Legal Mechanism	Technical Viability	Highway Land or within TSH control?	Cost viability	Predicted Cyclist Demand (Full Development) per	DR/Enhanced bus service	RAG
1	✓	✓	✓	✓	58	✓	Green
2	✓	✓	✓	✓	58	✓	Green
3	✓	x	✓	x	70	✓	Red
4a	✓	x	✓	x	26	✓	Red
4b	✓	✓	✓	x	21	✓	Red
5	✓	x	✓	x	326	✓	Red
6	x	✓	x	✓	326	✓	Yellow
7	✓	✓	✓	x	326	✓	Yellow
8	✓	✓	✓	✓	326	✓	Green
9	x	✓	x	✓	326	✓	Red
9a	x	✓	x	✓	326	✓	Red

8.26. Given the above analysis, it is proposed that the following enhancements will be delivered to promote cycling to the HNRFI development:

- Option 1 – Enhancement to Barwell, Toucan crossing on A47
- Option 2 - Enhancement to Barwell, Gateway at The Common

- Option 8 – Enhancement to Hinckley and Burbage, New Cycle Lane to the B4669 between Smithy Lane and Wilkinson Avenue.
- 8.27. Enhancements 1 and 2 are deliverable within public highway and are considered to provide good additional connectivity benefit to cyclists to/from Barwell.
- 8.28. Enhancement 8 is deliverable within the public highway boundary and provides a good connection between the large catchment area of Burbage and the site infrastructure via a shared footway/cycleway link along the B4669. This connects to the largest population base within a convenient (5km) distance from the site. The route also links up with the rail and bus station to provide multi-modal journey potential for employees.
- 8.29. It should be noted that the schemes listed above have been developed using on site measurements and OS mapping and those taken forward would need designing in detail to understand and overcome any constraints. Agreement of the local highway authority through a technical approval process would be required prior to implementation.
- 8.30. The suggested trigger for the works in connection with the cycle upgrades is prior to the occupation of 105,001sqm of floorspace. This allows for the access infrastructure and associated footway/cycle ways to be established and operational. It will also be the point at which increased employee numbers could attract up to 130+ cyclists per day from Hinckley and Burbage. The connections suggested above enhance the local cycle network above the necessary links to existing cycle routes providing a net benefit to cycle infrastructure around Hinckley, Earl Shilton and Barwell.
- 8.31. Key to the delivery of any infrastructure is the availability of the land for cycle upgrades. Where improvements sit within the adopted highway boundary, it is possible for legal mechanisms to enable the design and implementation of a scheme. Delivery of Options 1, 2 and 8 within the adopted highway boundary is to be secured through the Requirements to implement the STS in the Development Consent Order. These active travel works will be separate to the highway mitigation works and therefore are outside of the development redline boundary.
- 8.32. The other potential enhancement schemes identified have various associated constraints. Where land is restricted or significant engineering interventions are necessary to achieve even basic standards, the viability is recognised as limited.
- 8.33. Enhancement 3 provides a crossing point over the B581 for access to Bridlepath Road from Wilkinson Lane and a connection to the A47 along the B581 itself. These enhancements, while deliverable within the highway boundary require the relocation of significant amount of street furniture, including lighting and associated utilities, signage and overhead cables. In addition, an existing, high quality route linking to the main catchment to the north of the development, Earl Shilton, is available alongside the A47 via the new link road and therefore the benefit of this enhancement is considered to be limited. The difference in distance from Earl Shilton via either route is less than 50m.
- 8.34. Routes to the Eastern Villages (4a and 4b) pick up very limited numbers of projected cyclists, but the costs of implementation of an off carriageway link, where achievable, are high due to steep level differences at the highway boundaries, issues with piping ditches (which potentially require third party approvals impacting biodiversity) and the requirement to install crossing points along the routes due to constraints such as

buildings. The limited benefit due to the projected catchment area, has rendered these enhancements as not viable from a financial viability perspective at present, particularly when compared against the projected employee numbers from areas to the North, West and South of HNRFI. Whilst this upgrade is not proposed, residents of the Eastern Villages will have access to the DRT for a sustainable route to HNRFI.

- 8.35. A focus on Hinckley and connections to existing routes is recognised as providing a better solution for a much wider number of potential employees. Upgrades to PRow routes (6/9 and 9a) are limited due to ownership constraints as mentioned above.
- 8.36. Enhancement 5 involves many of the same constraints as enhancement 4 with narrow boundaries, and steep embankments at the back of the existing narrow footways a considerable constraint to delivery of a footway/cycleway route that is to suitable standards. While the benefit of this route is greater than that of enhancement 4, it is not considered to be economically deliverable, and as other more suitable routes from Hinckley and Burbage are available to potential employees, is therefore discounted from this process.
- 8.37. Enhancement 6 requires surfacing of an existing bridleway through a wooded area within land within the ownership of Hinckley Rugby Club. The works would include alterations within this private land and would involve encroachment and alteration to sports pitches to create space to provide the enhancement. There is a good quality, alternative route to the development available by utilising Barwell Lane to the A47 and then the B4668 to the link road. This provides a well surfaced, high quality connection with no additional crossing points compared with enhancement 6, it is an additional 600m to the Enhancement 6 option- which is a circa 2 min journey time on a bicycle.
- 8.38. The discounting of enhancements 5 and 6 mean that enhancement 7 would deliver little benefit as there is no significant catchment area connecting to the proposed crossing point onto Burbage Common Road at the B4668.
- 8.39. Enhancements 9 and 9a follow a similar route to Enhancement 8 servicing the same population area, and require the upgrading of PRow designated as footpath to bridleway, as well as surfacing and lighting additions to create a route suitable for commuting cyclists. This would involve works within both private land and Common land.
- 8.40. Enhancement Options 3, 4a, 4b, 5, 6, 7, 9 and 9a are therefore considered to be of limited value in helping to achieve the increase in Modal Split Targets sought through Active Travel measures.
- 8.41. While connecting the site into the existing cycle network infrastructure was considered capable of achieving the Modal Split Targets sought through Active Travel measures, the additional commitment to delivery of Options 1, 2 and 8, connecting to the main population centres, will further assist in meeting these targets, and represents a logical focus for priority investment for Active Travel improvements. As explained elsewhere in this document, other modes of Sustainable Travel connectivity are considered to offer better options for sustainable travel choice to other local communities.

A47 Long Shoot Cycle Route

- 8.42. This will create approximately 1.4km of new high quality, safe, segregated cycle track on the A47 Long Shoot as part of a strategic cycle route connecting Nuneaton to Hinckley. The scheme will encourage and enable a shift from car-based travel to cycling for local journeys, providing the necessary sustainable transport links to the town centre and rail station to support Transforming Nuneaton and the significant residential expansion in north-east Nuneaton.
- 8.43. To the west, the scheme will connect to new cycling infrastructure to be delivered by the A47 highway improvement scheme to create a continuous cycle route between north-east Nuneaton and the town centre. To the east, the scheme will connect with the existing cycle route on the A5 to provide a connection to Hinckley. WCC have approved an allocation of £0.438 million for the A47 Long Shoot cycle route scheme.
- 8.44. Plans of the scheme are included in **Appendix 1**.

A47 Hinckley Road Improvements

- 8.45. The A47 Hinckley Road scheme will provide eastern Nuneaton with a new junction, an improved roundabout with additional pedestrian facilities and improved road and cycling infrastructure.
- 8.46. It is the main route into Nuneaton from the A5 and east Nuneaton to the town centre. The corridor passes through an existing densely populated area which will experience significant housing expansion through the Borough Plan proposals.

Future Measures: Bike Share / E-Bike Scheme / Mobility Hub

- 8.47. A bike share scheme is a service whereby cycles are made available for use by individuals on a short-term bases for a small fee. Many bike share schemes allow people to borrow a bike from a docking station (bike rack) where it is locked until release by computer control following payment. The user then returns the bike to a dock from the same system. Other bike share schemes are dockless and bikes can be picked up and dropped off from virtual docks in a range of locations, which can be identified via a mobile phone app.
- 8.48. Bike share schemes have been found to be successful in achieving modal shift. The Bike Share Users Survey 2018 quantified this by asking respondents how they previously travelled for the trip that they last made by bike share. The results were as follows:
- 42% previously walked.
 - 23% previously used the bus.
 - 4% previously used the train/tram or light rail.
 - 18% previously travelled by car or taxi.
 - 7% previously used their own bike.
 - 7% were using the bike share scheme as a new journey.

- 8.49. Bike share has also been found to add flexibility to a journey and is often used as the first or last mile of a journey. The survey identified that 26% of respondents used bike share in conjunction with the bus and 21% in conjunction with the train. 24% of respondents use bike share in conjunction with the car.
- 8.50. Subsequently, new bike/e-bike hire hubs can also be incorporated within the HNRFI which would provide easy, convenient access to cycle travel. With the recent termination of the Santander Bike within Leicester, there is currently no existing hire hub scheme within the county. This approach would need to be re-assessed post occupation and aligned with the site wide travel plan, which the applicant is fully committing to within the Travel Plan.
- 8.51. This provision will provide good opportunities for the employees to cycle for all or part of their journey. In addition, the membership pricing system and the provision of bike stations at local train stations could also encourage multi-modal journeys.
- 8.52. Mobility hubs are an emerging concept for large employment sites as well as urban areas. These are areas set aside for mobility interchange and can incorporate, bus stops micro-mobility modes, such as e-scooter hire and car club spaces.
- 8.53. Every year, the viability of these transport options and the opportunity for HNRFI will be explored with stakeholders and promoted and reported in the Travel Plan monitoring process. This will seek to enhance travel options and delivery of effective travel planning schemes.

9. CAR SHARING AND CAR CLUB

Car Sharing

- 9.1. Car sharing (also called lift-sharing, ride-sharing and car-pooling) is when two or more people share a car and travel together. Car sharing provides people with the convenience of the car, whilst reducing the costs and the number of single occupancy vehicles on the road. Thereby helping to reduce pollution and congestion.
- 9.2. Car sharing schemes operate best when employees travel to and from similar locations at similar times. Therefore, they rely upon large employee pools, shift working and dense population centres to maximise sharing opportunities. Typically, employees sign up to a car share scheme and their details are held on a secure database to be matched with others who can provide or require a lift. Car sharing can take place on a regular basis, or ad hoc if required.
- 9.3. Further advice has been sought from Lift and Go, a specialist provider who analyse and provide bespoke solutions for organisations to boost the take-up of car sharing across an employment zone. Further analysis from Lift and Go is included in **Appendix 3**, which has informed the mode share for the HNRFI site.
- 9.4. Lift and Go has had significant success on similar employment sites and would target 20% to 30% of HNRFI employees car sharing, which is similar to the 25% reported at EMG. They predict that car sharing is likely to be most effective from Leicester with 40% of car sharers expected to originate from this area, with Coventry (15%), Birmingham (10%), Solihull (10%) and Rugby (5%) making up another 40%. The example of EMG demonstrates that the proportional use of car sharing as a sustainable means of transport increases as the development phases progress.
- 9.5. The offer includes the set-up of a bespoke site-specific phone app for drivers and passengers to share lift details. The app will be set up to cover all occupiers at HNRFI and each occupier will be free to choose whether to join the site wide app, or have a private occupier-only version of the app available for their members of staff.
- 9.6. Details of the app will be shared via the Travel Plan Coordinator and included within the Travel Packs provided prior to first occupation of the units. So that car sharing is a travel choice from the earliest opportunity, the Applicant will ensure the HNRFI car share platform is operational from first occupation. Individual users will be able to download the app and register their details, this will include their start location and journey requirements. The app will provide the secure database and messaging system to allow members to find someone to car share with.
- 9.7. There would also be the opportunity to expand the platform to include other major employers in the vicinity of HNRFI. Depending on operational practices, these businesses would have the option to provide their employees with access to prospective car sharers from all businesses on the platform or restrict access to selected businesses, or simply their own. This expansion could further enhance the benefits of car sharing to both the HNRFI and the wider business community.
- 9.8. The performance of the car sharing scheme will be reviewed annually, reported and shared to Leicestershire County Council Highways and the Travel Plan Steering Group

as part of the Site Wide Travel Plan Monitoring. Should monitoring identify the car sharing is not operating at anticipated levels, the annual review will identify additional measures such as further promotion of the app and expansion of the app coverage.

Car Clubs

- 9.9. A car club offers the convenience of being able to use a car for those trips that cannot be undertaken using public transport, cycling or walking, or as an emergency alternative. Car clubs can provide a great alternative to car ownership, as people can have access to a car without having to own one.
- 9.10. Car clubs work by giving members access to a car on a short-term “pay as you go” rental basis and charging by the hour or the day. A car can be booked online or by phone and then unlocked from a designated bay.
- 9.11. This can provide cost savings, as there is no car tax, fuel, MOT or car servicing to pay. Instead, users pay for membership to the scheme and the car hire when they use it. Research has shown that low-mileage drivers i.e. those drive less than 8,000 miles per year could save up to £3,500 a year.
- 9.12. In addition, car club vehicles tend to be more environmentally friendly, emitting over 20% less CO2 per kilometre than the average car, and they are used more efficiently and help to reduce congestion and free up parking spaces.
- 9.13. Use of a car club will help to reduce the required number of company cars at the site and improve car utilisation efficiency. It will also allow employees travelling to the site by sustainable modes of transport to use a car for their errands at lunch breaks. It is proposed that priority parking for car club vehicles will be provided within the HNRFI for use by employees at the site and are included as a measure within the site Travel Plan.

10. SUMMARY

- 10.1. BWB Consulting Ltd (BWB) has been appointed by Tritax Symmetry (Hinckley) Ltd to provide transportation advice to support a Development Consent Order (DCO) for Hinckley National Rail Freight Interchange (HNRFI) including 850,000 square metres of gross internal area (GIA), comprising 650,000 square metres at ground floor level and a further 200,000 square metres of mezzanine floorspace of new B8 warehousing and distribution space alongside a purpose-built rail freight terminal to the north-east of Hinckley, Leicestershire.
- 10.2. This Sustainable Transport Strategy (STS) has been produced to analyse the opportunities to maximise the use of sustainable modes of transport to and from the site. Due to the location of the site and the nature of the development, it is anticipated that this will primarily be achieved through car sharing, public transport and cycling. Consequently, this is the main focus of the STS. Nevertheless, it is considered that the existing local facilities would adequately cater for those wishing to walk to the site.
- 10.3. The Applicant is committed to achieving the modal share targets set out in this document, with the following measures proposed to ensure a comprehensive bus provision and to encourage car sharing and cycling.
- 10.4. The Travel Plan Coordinator for the site will be responsible for monitoring the travel use following occupation, recording modal share and ensuring that targets are met or measures are in place to address any shortfall in non-car usage. Should the single occupancy targets not look like they will be achieved while the Travel Plan is being monitored, the Travel Plan coordinator will actively increase measures as set out in the STS and increase promotion training and activity at the HNRFI aligned to the Framework Travel Plan. This could include intensive short-term campaigns for particular modes of transport (for example intensive programmes to promote walking, cycling, car sharing or public transport) on site travel clinics and Personalised Travel Planning.

Public Transport

- ~~10.4.10.5.~~ Public transport connections, combined with car sharing offers the most significant opportunity for mode shift to the site. This is due to catchments and likely workforce origins.
- ~~10.5.10.6.~~ To enter into private service agreements (secured through requirement to comply with this document) with local bus operators, to provide services between the HNRFI and the following areas from first occupation.
- Coventry & Leicester via enhancement of Arriva X6 (or a similar route should the X6 be removed as a service).
 - Hinckley & Nuneaton (including both railway stations) via enhancement of Arriva 8 or similar route.
 - Surrounding Villages via a Demand Responsive Transport (DRT) service).
 - Private service for the south east of Leicester

~~10.6.10.7.~~ Bus provision to these areas would coincide with office hours and standard warehouse shift changes on all HNRFI working days. It would be maintained as the baseline service provision going forward.

~~10.7.10.8.~~ Dedicated bus infrastructure is to be provided on the A47 Link Road prior to first occupation. This includes a bus interchange with a large purpose-built shelter and layby on the eastbound carriageway, providing full kerbed separation from the link road. The westbound bus stop will also have a layby and bus shelter and will be connected to the site via a signal-controlled pedestrian crossing.

~~10.8.10.9.~~ Scheduled bus services and the DRT will stop at the bus stops on the A47 Link Road (the interchange).

~~10.9.10.10.~~ A private shuttle bus will be provided between the A47 Link Road interchange and the internal bus stops. The timetable for this private service will be established to coincide with the arrival and departure times of scheduled bus services stopping at the interchange on the A47 Link Road, Bus stops, shelters and live travel information will be provided throughout the development to allow passengers to board and alight within 400m of every building. .

~~10.10.10.11.~~ A free 6 month pass will also be available to the employees in the first six months of occupation of each building for the public bus services (currently X6 and 8~~7~~) and the DRT/Private services. Consequently, the Site Wide Travel Plan Coordinator will promote the availability of these passes and any other local or national schemes to encourage bus travel

~~10.11.10.12.~~ As the HNRFI will be delivered on a phased basis, passenger demand will increase over time and the requirements for bus provision will evolve. Therefore, as part of the Travel Plan Monitoring, every year following first occupation the Site Wide Travel Plan Co-ordinator will analyse bus patronage and staff travel surveys to establish the effectiveness of the bus provision in achieving modal shift.

~~10.12.10.13.~~ In the event the review demonstrates that the car driver target modal share is not being achieved, provision for additional and/or alternative public transport will be made to reflect the identified requirements.

Active Travel

~~10.13.10.14.~~ Active travel commitments are focused on the delivery of connections to existing cycle network and enhancements to nearby areas with the highest potential for cycling as a viable journey to work. Pedestrian options are limited due to the location of the site and typical distances workers are willing to walk to work, though crossings and links provided for cyclists are dual use.

~~10.14.10.15.~~ The buildings at HNRFI will be designed to BREEAM excellent standards and with cyclists in mind. Covered, secure and accessible cycle parking will be provided prior to first occupation of each unit and monitored for adequacy. Showers and changing facilities will also be provided. Travel Plans will include a range of measures for occupiers to tailor for their workforce. This will include the option to participate in a Cycle to Work scheme, Bike User Groups and national promotion events such as Cycle to Work Day.

~~10.15.10.16.~~ A network of pedestrian/cycle routes are proposed throughout HNRFI. These would connect to a footway/cycleway on the southern side of the A47 Link Road to provide direct cycle connections to the identified Hinckley Cycle Routes. Connections would also be provided to Smithy Lane and Burbage Common Road.

~~10.16.10.17.~~ Prior to commencement of the first building, the Applicant will provide LCC with an audit of locations where footway widths are reduced by poor maintenance and overgrown vegetation, so that maintenance can be undertaken prior to first occupation.

~~10.17.10.18.~~ In consultation with LCC, wayfinding cycle signage will be provided at key locations on the identified Hinckley Cycle Routes between HNRFI and the main cycle catchment areas of Hinckley, Burbage Earl Shilton, Barwell and Elmesthorpe.

~~10.18.10.19.~~ Whilst the above provides good cycle access to the site from the main identified catchment areas, options for potential future enhancements have been reviewed and assessed. The recommendations are to enhance linkage to areas where population centres are largest and within a reasonable cycle commute (5km). This includes Barwell, Hinckley and Earl Shilton. Enhancements that are envisaged through preliminary design to sit within public highway boundaries, which are then under the control of the applicant and deliverable through mechanisms secured through the DCO and this STS.

~~10.19.10.20.~~ In summary the proposed routes are:

- Option 1 – Enhancement to Barwell, Toucan crossing on A47
- Option 2 - Enhancement to Barwell, Gateway at The Common
- Option 8 – Enhancement to Hinckley and Burbage, New Cycle Lane to the B4669 between Smithy Lane and Wilkinson Avenue.

~~10.20.10.21.~~ These will be delivered prior to the occupation of 105,001sqm of floorspace of the site. Delivery of these enhancements is subject to satisfactory detailed design post consent, the works being within the public highway and approval by Leicestershire County Council.

Car Share Platform

~~10.21.10.22.~~ From first occupation a car sharing platform (app or similar) will be available for all staff at HNRFI to share details of lift availability to and from the site. The performance will be annually reviewed and reported on as part of the Site Wide Travel Plan monitoring.

Future Mobility

~~10.22.10.23.~~ As part of the Travel Plan, every year following the first occupation, the Travel Plan Co-ordinator will undertake a feasibility review for:

- The establishment of a mobility hub in the vicinity of the public transport interchange within the HNRFI
- The establishment/participation of a Hinckley bike/e-bike share scheme.

- The establishment/participation in a Hinckley car club scheme

~~10.23.~~10.24. Through the implementation of all of these proposed measures and the operation of an effective Travel Plan, it is considered that sustainable travel will be encouraged, modal share targets achieved, and development traffic will be reduced in accordance with the various national and local transport policies.

APPENDICES

APPENDIX 1: A47 Long Shoot Cycle Route

APPENDIX 2: Active Travel Catchments

APPENDIX 3: HNRFI Car share analysis

APPENDIX 4: Cycle Routes Options Table

APPENDIX 5: Cycle Option Schemes

APPENDIX 6: Proposed Bus Timetables

APPENDIX 7: Leicester PT Catchment (J21 through travel)



A **CAF** GROUP COMPANY



A **CAF** GROUP COMPANY